



# Bathymetric Surveys 2019

Summary of activities in part of reporting for  
FES Project 18-043 - Fisheries Projects within  
the North Parkland

Author: Megan  
Paterson

December 2019

Swan Valley Sport  
Fishing Enhancement Inc.

## Background Information:

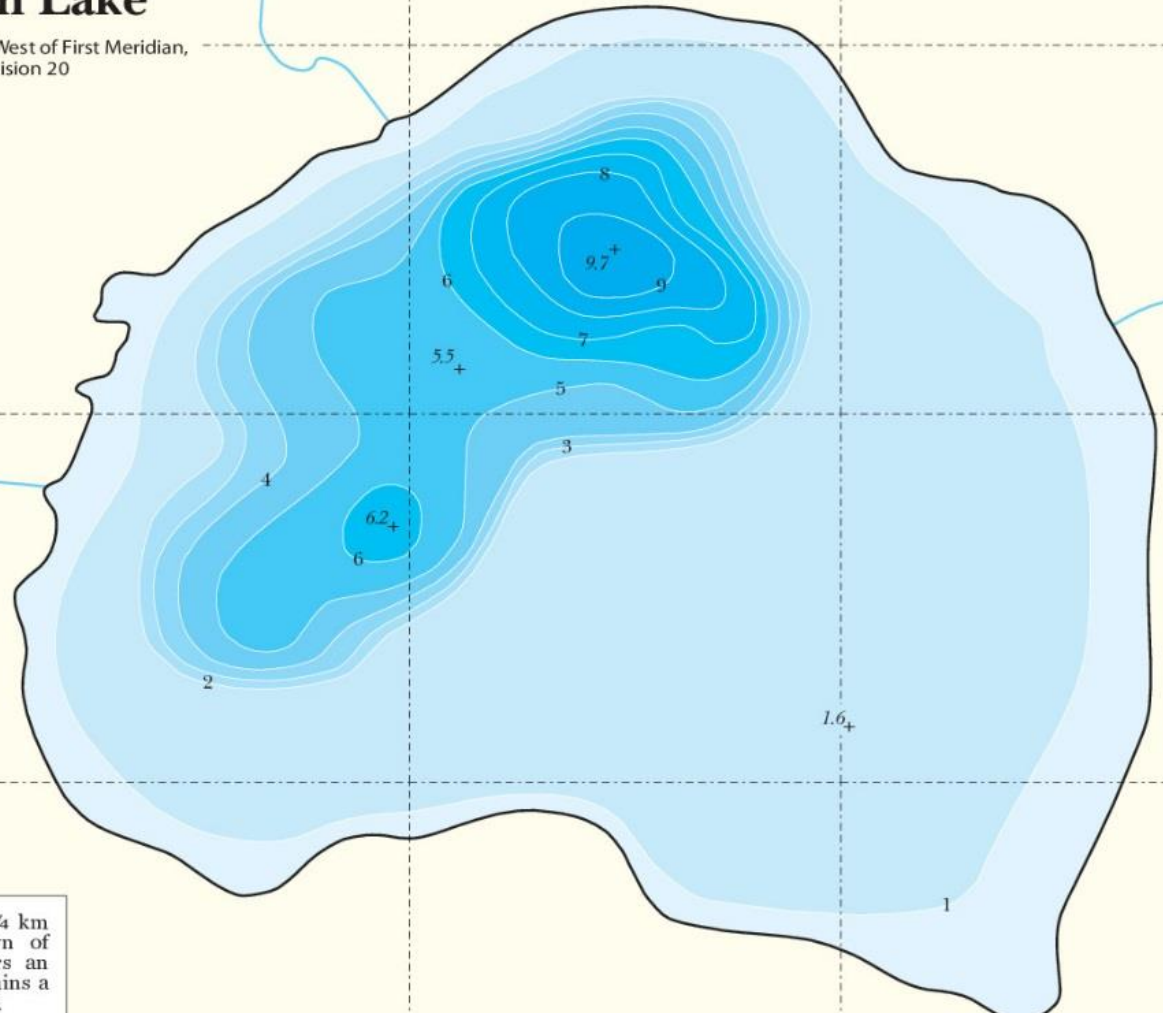
SVSFE has been conducting bathymetric surveys and distributing contour data to anglers since 2009. At current, this data is not only used for public distribution and angler reference, but also for research purposes. To date, data on a total of 68 different angling lakes in the Porcupine and Duck Mountains has been collected and distributed. At current, all contour data collected previously, and in 2019 is easily downloadable on the SVSFE website. Available for download is not only jpegs of data, but also .kmz and .gpx files of contour data for user preference. For more information pertaining to SVSFE mapping methods and protocols please refer to: Bathymetric Mapping of Local Lakes (Prj. 15-043).

## Summary of Activities:

During the summer of 2019, SVSFE surveyed a total of nine "new lakes" including angling destinations and lakes to be explored for fish introductions. Of these were East Fish Lake, Elk Lake, Island Lake, Langan Lake, Long Lake, Macdonald Lake, North Angling Lake, South Angling Lake and Whitemud Lake. Because SVSFE does not currently have access to GIS software, outside entities have created final products over the years. Most recently, Eric Wienckowski from the University of Minnesota has graciously been creating map products in exchange for raw data for his current research on the history of bathymetric surveys in natural lakes. This data is used as a reference in lake sedimentation and coring studies.

# East Fish Lake

Township 29, Range 26 West of First Meridian,  
Census Division 20



East Fish Lake is located 68¼ km south-southeast of the town of Swan River. The lake covers an area of 36.6 hectares and attains a maximum depth of 9.7 meters.

All depths are in meters.

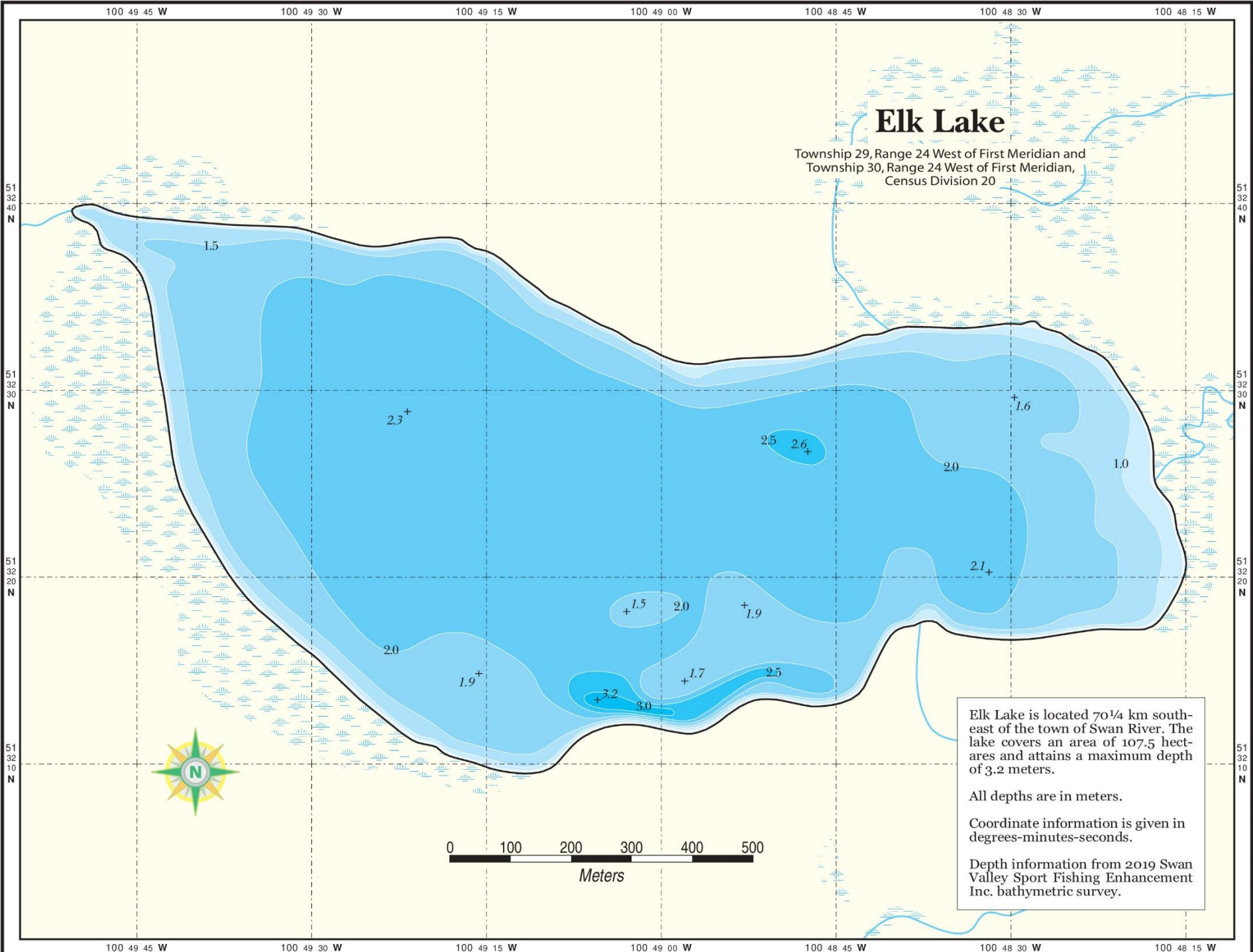
Coordinate information is given in degrees-minutes-seconds.

Depth information from 2019 Swan Valley Sport Fishing Enhancement Inc. bathymetric survey.



# Elk Lake

Township 29, Range 24 West of First Meridian and  
Township 30, Range 24 West of First Meridian,  
Census Division 20



Elk Lake is located 70¼ km south-east of the town of Swan River. The lake covers an area of 107.5 hectares and attains a maximum depth of 3.2 meters.

All depths are in meters.

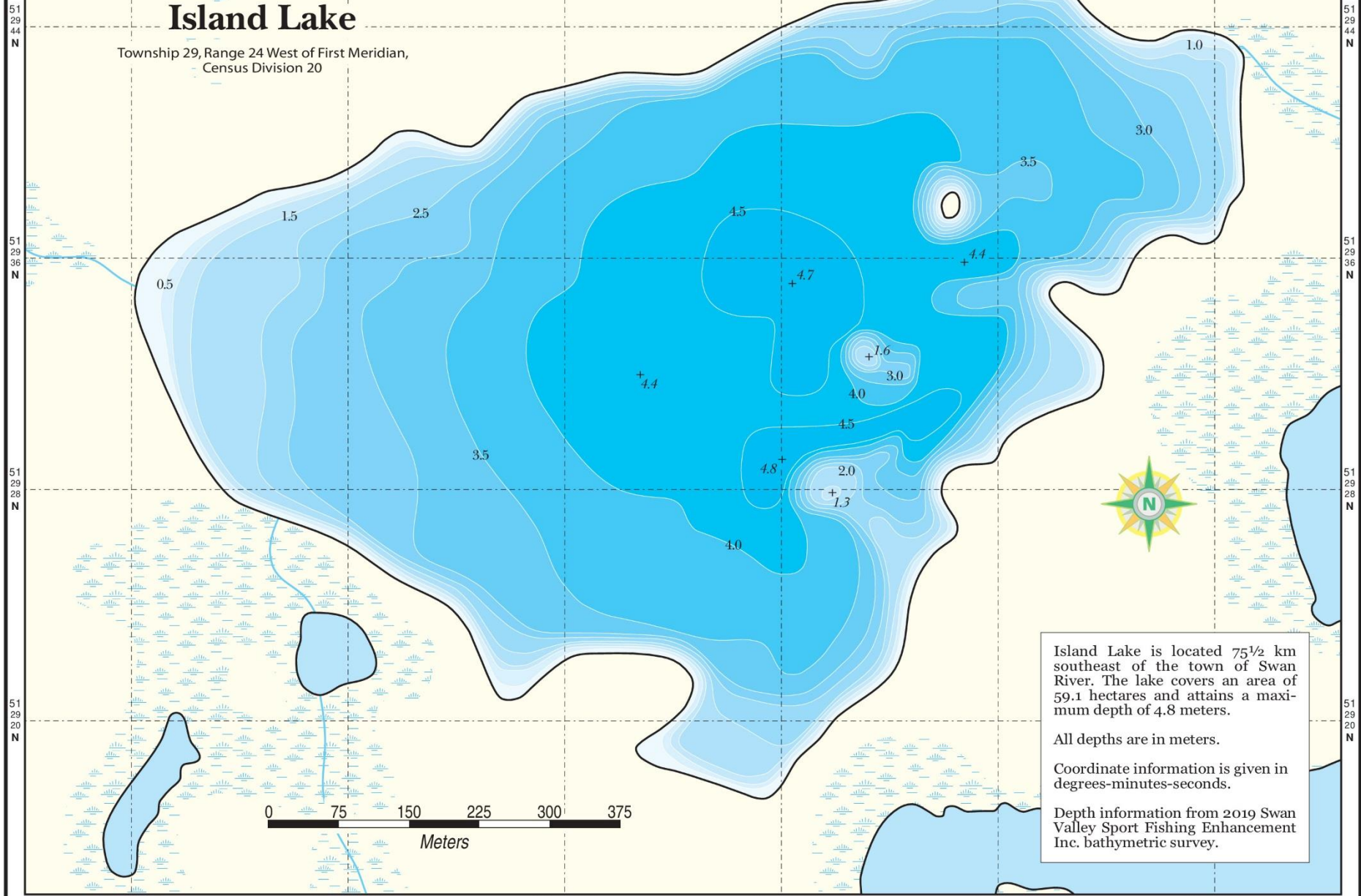
Coordinate information is given in degrees-minutes-seconds.

Depth information from 2019 Swan Valley Sport Fishing Enhancement Inc. bathymetric survey.

100 48 12 W      100 48 00 W      100 47 48 W      100 47 36 W      100 47 24 W      100 47 12 W

# Island Lake

Township 29, Range 24 West of First Meridian,  
Census Division 20

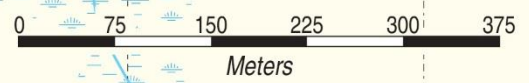


Island Lake is located 75½ km southeast of the town of Swan River. The lake covers an area of 59.1 hectares and attains a maximum depth of 4.8 meters.

All depths are in meters.

Coordinate information is given in degrees-minutes-seconds.

Depth information from 2019 Swan Valley Sport Fishing Enhancement Inc. bathymetric survey.

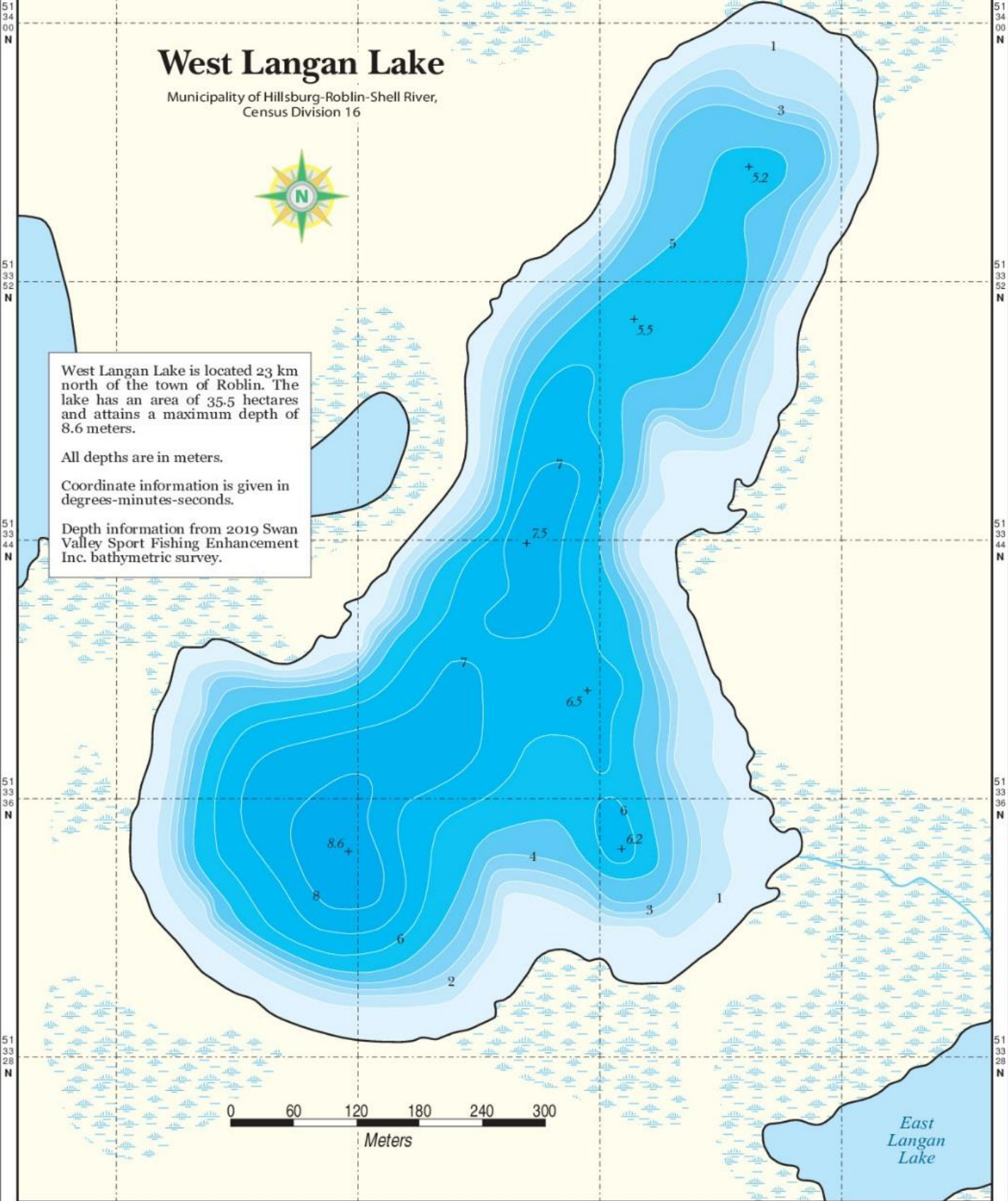


51 29 44 N  
51 29 36 N  
51 29 28 N  
51 29 20 N

51 29 44 N  
51 29 36 N  
51 29 28 N  
51 29 20 N

100 48 12 W      100 48 00 W      100 47 48 W      100 47 36 W      100 47 24 W      100 47 12 W

101 20 48 W 101 20 36 W 101 20 24 W 101 20 12 W



# West Langan Lake

Municipality of Hillsburg-Roblin-Shell River,  
Census Division 16

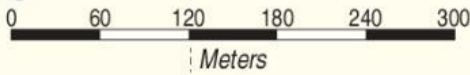


West Langan Lake is located 23 km north of the town of Roblin. The lake has an area of 35.5 hectares and attains a maximum depth of 8.6 meters.

All depths are in meters.

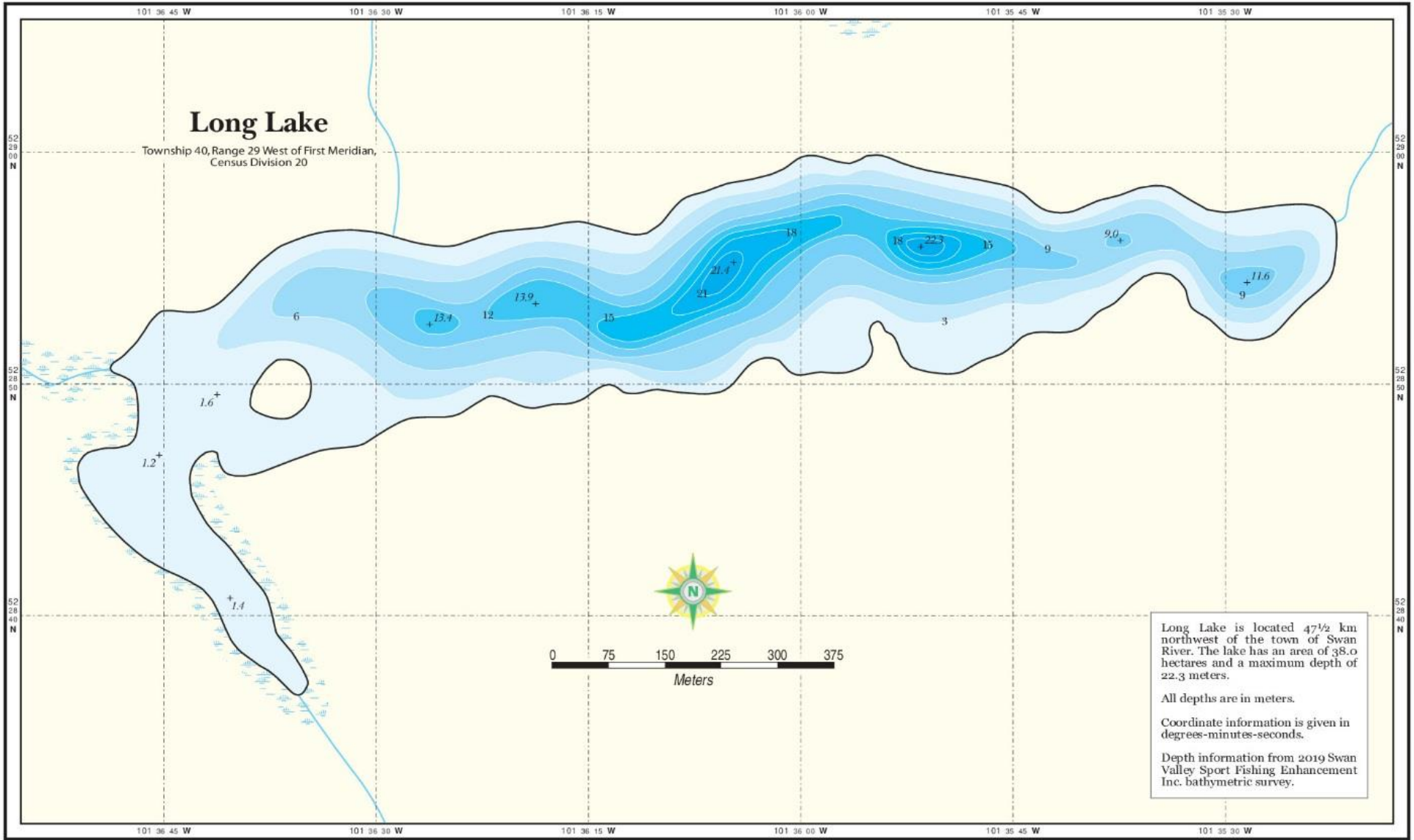
Coordinate information is given in degrees-minutes-seconds.

Depth information from 2019 Swan Valley Sport Fishing Enhancement Inc. bathymetric survey.



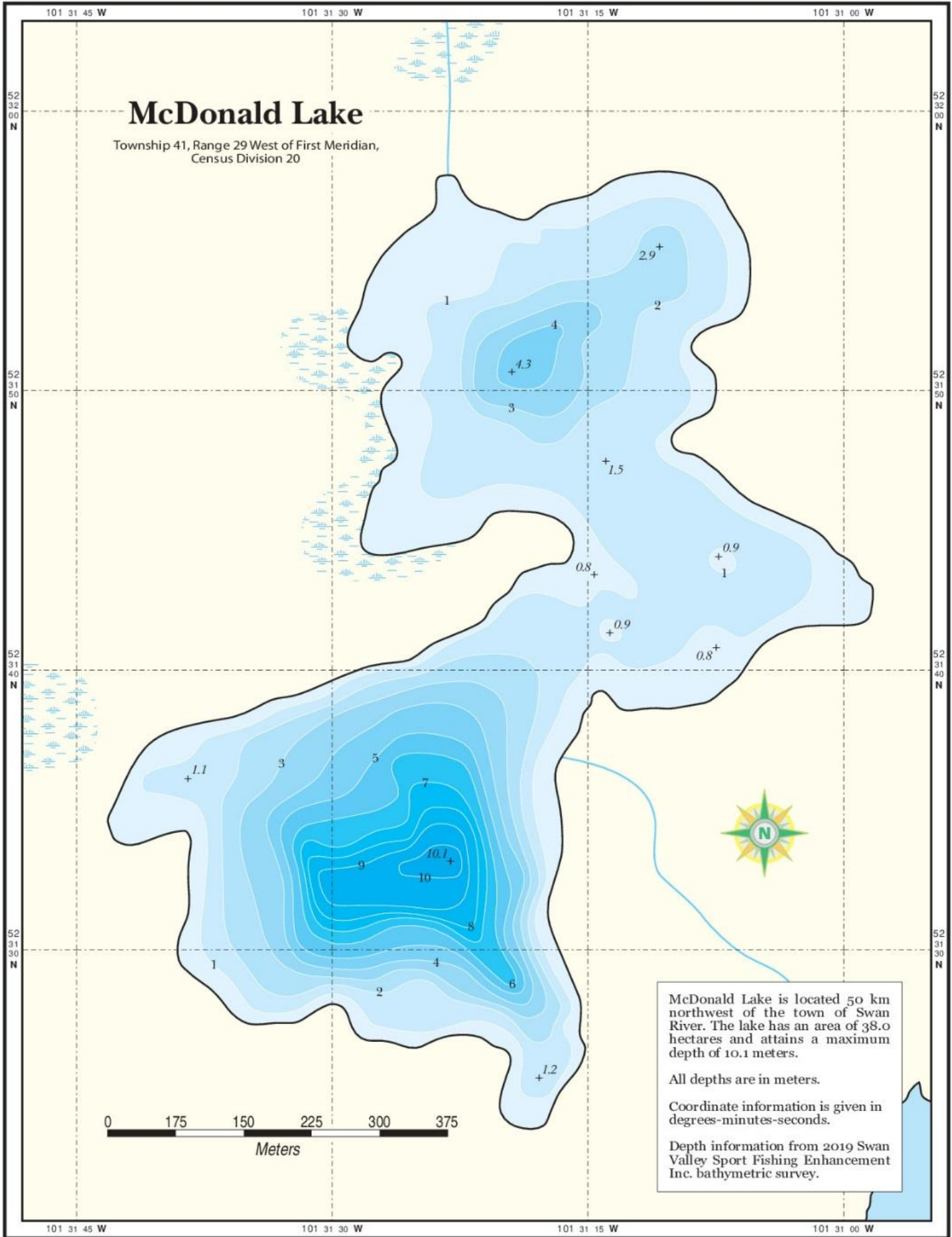
101 20 48 W 101 20 36 W 101 20 24 W 101 20 12 W

East Langan Lake



# McDonald Lake

Township 41, Range 29 West of First Meridian,  
Census Division 20



McDonald Lake is located 50 km northwest of the town of Swan River. The lake has an area of 38.0 hectares and attains a maximum depth of 10.1 meters.

All depths are in meters.

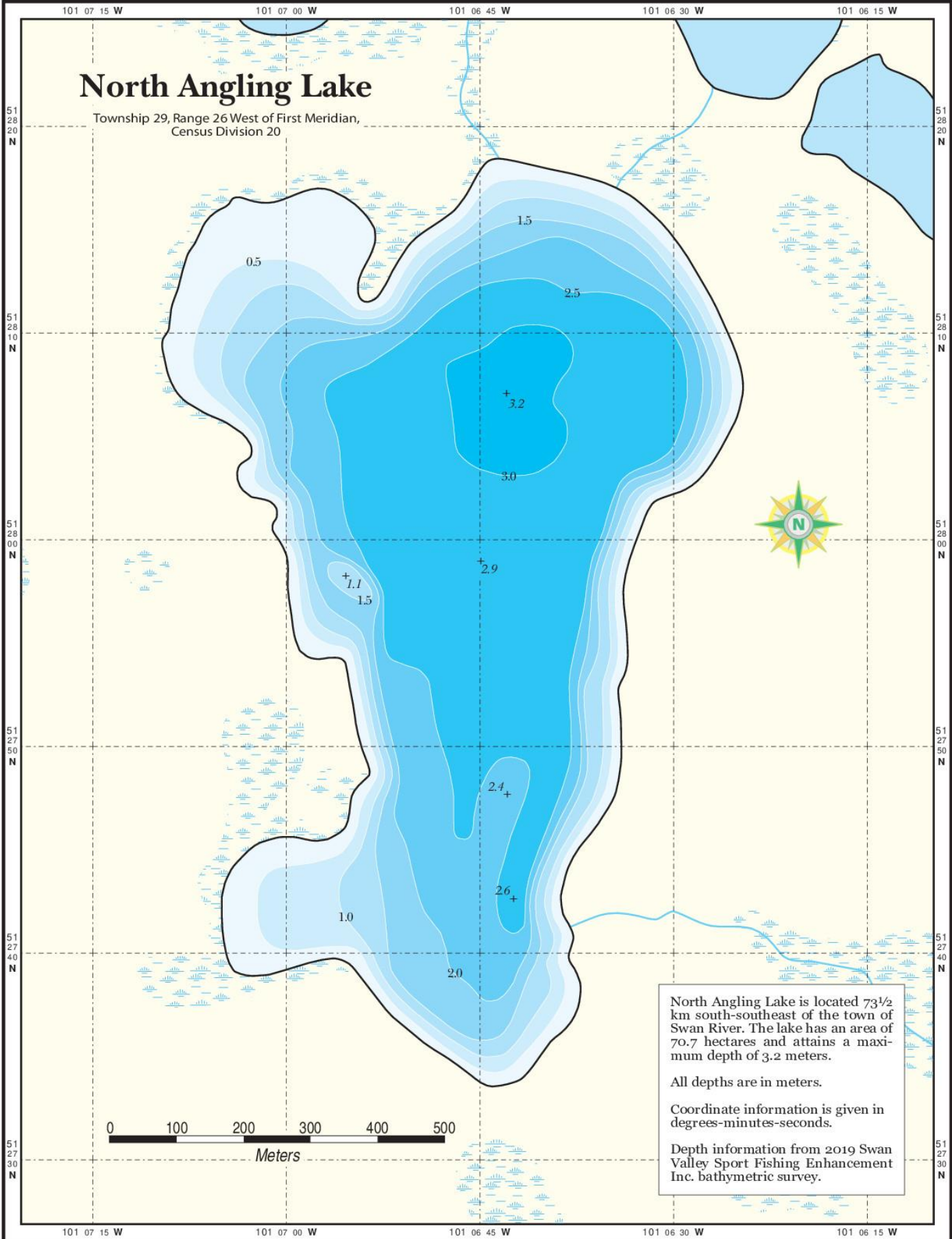
Coordinate information is given in degrees-minutes-seconds.

Depth information from 2019 Swan Valley Sport Fishing Enhancement Inc. bathymetric survey.



# North Angling Lake

Township 29, Range 26 West of First Meridian,  
Census Division 20



North Angling Lake is located 73½ km south-southeast of the town of Swan River. The lake has an area of 70.7 hectares and attains a maximum depth of 3.2 meters.

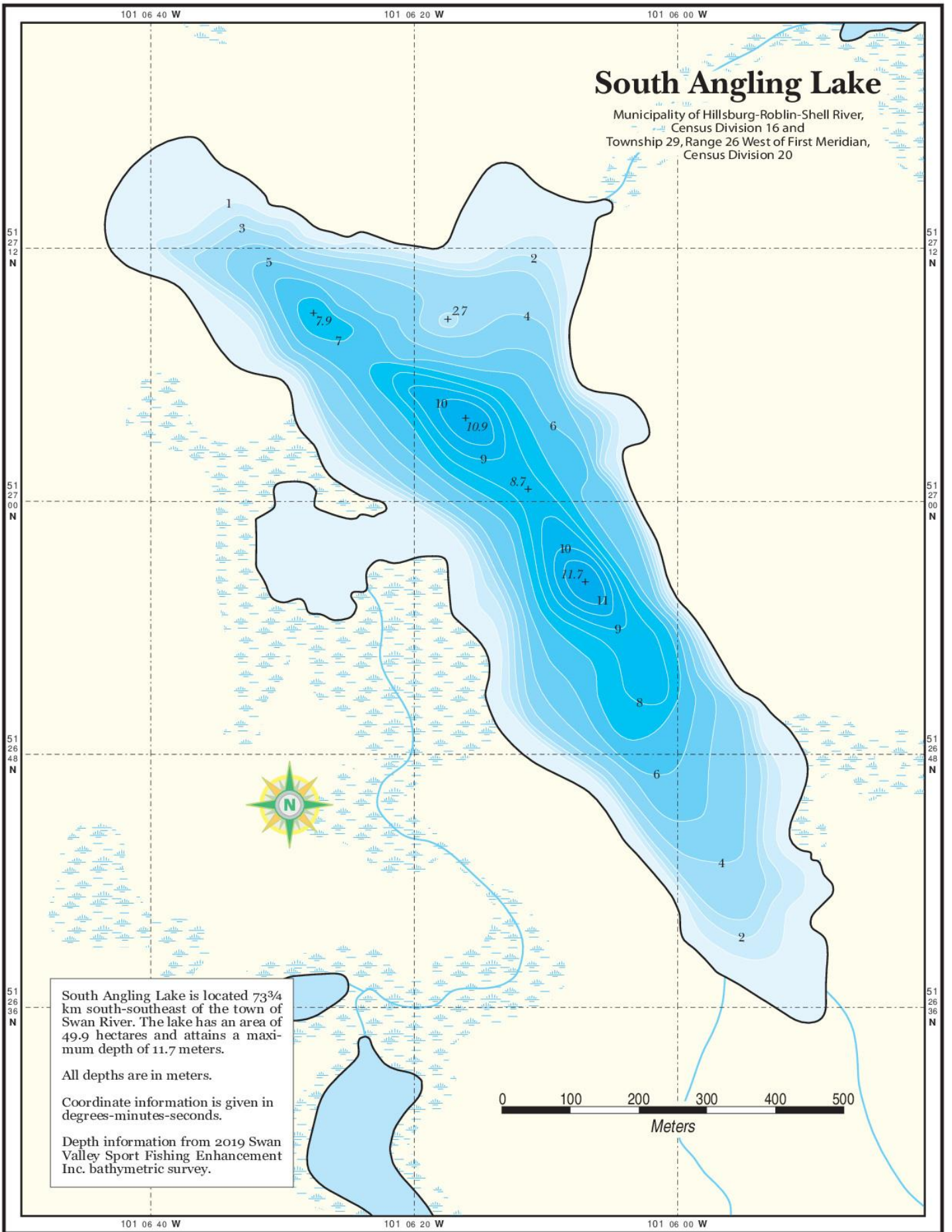
All depths are in meters.

Coordinate information is given in degrees-minutes-seconds.

Depth information from 2019 Swan Valley Sport Fishing Enhancement Inc. bathymetric survey.

# South Angling Lake

Municipality of Hillsburg-Roblin-Shell River,  
Census Division 16 and  
Township 29, Range 26 West of First Meridian,  
Census Division 20



South Angling Lake is located  $73\frac{3}{4}$  km south-southeast of the town of Swan River. The lake has an area of 49.9 hectares and attains a maximum depth of 11.7 meters.

All depths are in meters.

Coordinate information is given in degrees-minutes-seconds.

Depth information from 2019 Swan Valley Sport Fishing Enhancement Inc. bathymetric survey.

