

101 20 48 W

101 20 36 W

101 20 24 W

101 20 12 W

51 34 00 N

51 34 00 N

West Langan Lake

Municipality of Hillsburg-Roblin-Shell River,
Census Division 16



51 33 52 N

51 33 52 N

West Langan Lake is located 23 km north of the town of Roblin. The lake has an area of 35.5 hectares and attains a maximum depth of 8.6 meters.

All depths are in meters.

Coordinate information is given in degrees-minutes-seconds.

Depth information from 2019 Swan Valley Sport Fishing Enhancement Inc. bathymetric survey.

51 33 44 N

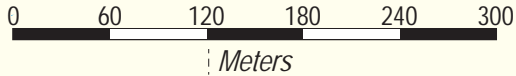
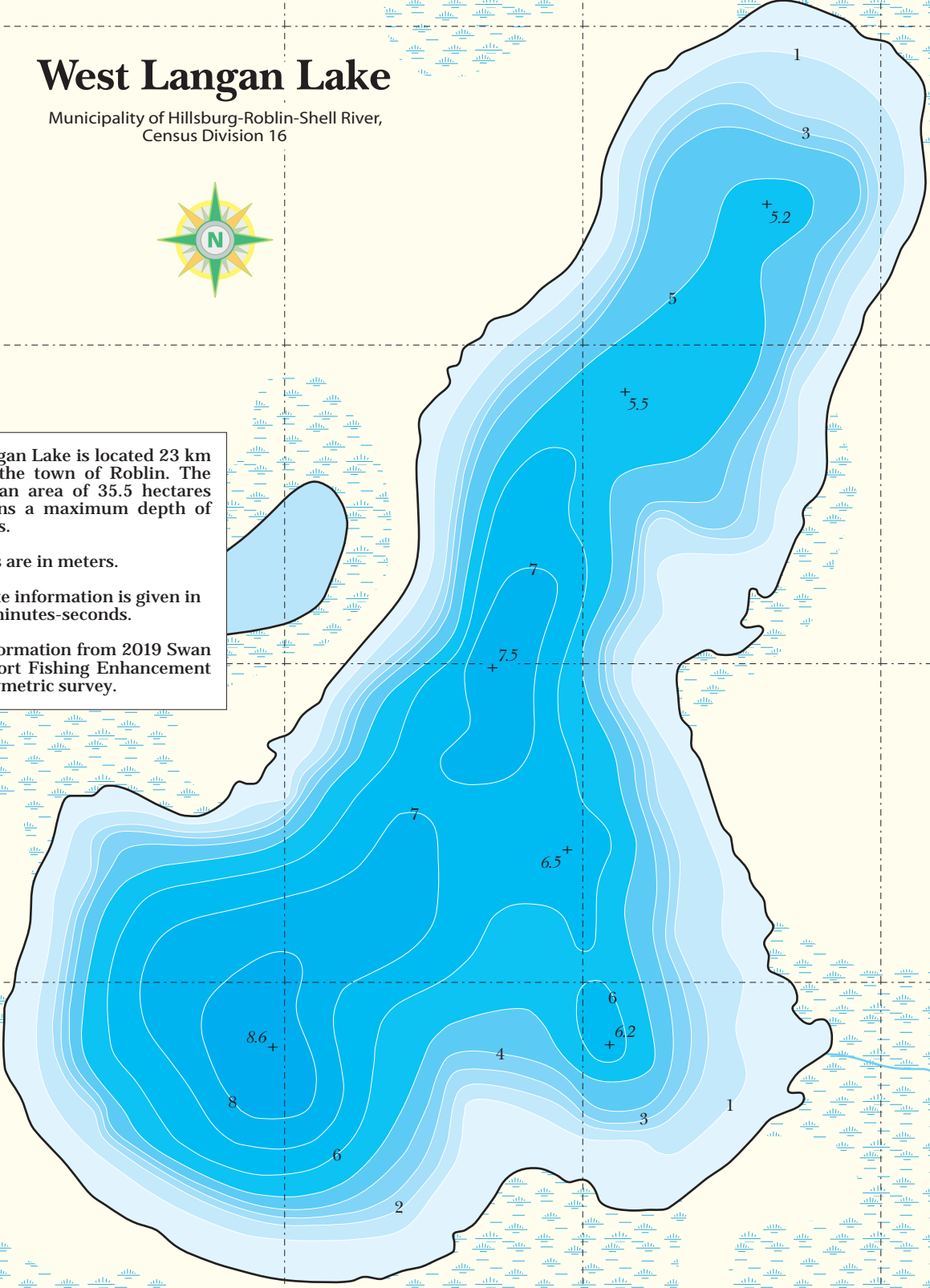
51 33 44 N

51 33 36 N

51 33 36 N

51 33 28 N

51 33 28 N



East Langan Lake

101 20 48 W

101 20 36 W

101 20 24 W

101 20 12 W