

101 29 10 W

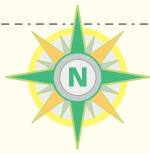
101 29 00 W

101 28 50 W

101 28 40 W

Lost Lake

Township 42, Range 28 West of First Meridian,
Census Division 20



52
35
48
N

52
35
48
N

52
35
42
N

52
35
42
N

52
35
36
N

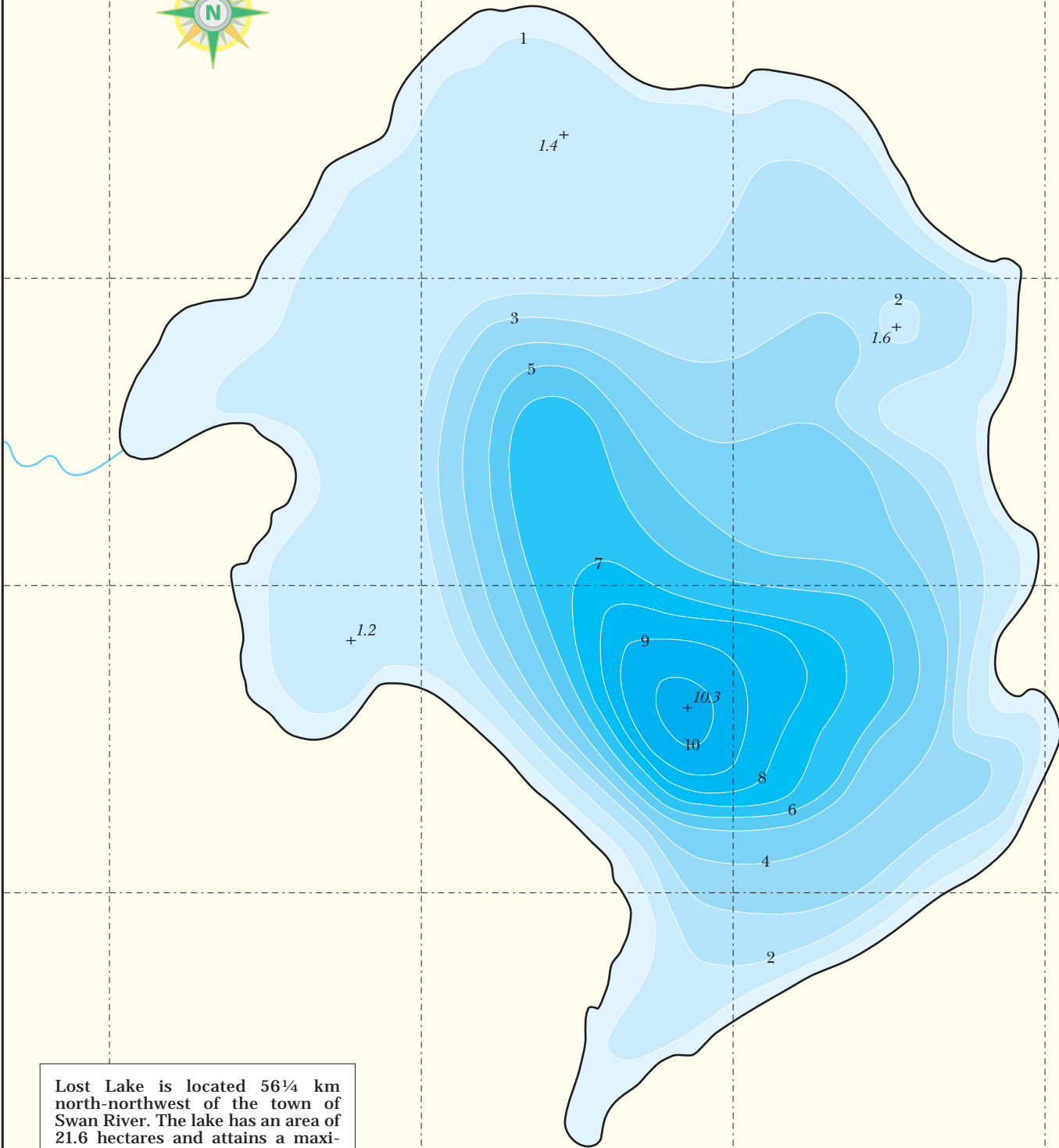
52
35
36
N

52
35
30
N

52
35
30
N

52
35
24
N

52
35
24
N

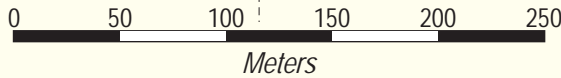


Lost Lake is located 56¼ km north-northwest of the town of Swan River. The lake has an area of 21.6 hectares and attains a maximum depth of 10.3 meters.

All depths are in meters.

Coordinate information is given in degrees-minutes-seconds.

Depth information from 2018 Swan Valley Sport Fishing Enhancement Inc. bathymetric survey.



101 29 10 W

101 29 00 W

101 28 50 W

101 28 40 W