


# IFA #1

A person wearing a dark winter jacket, a yellow hat, and carrying a yellow bag is standing on a vast, flat, snow-covered frozen lake. The person is positioned on the right side of the frame, looking towards the left. In the background, a dense line of evergreen trees stretches across the horizon under a clear blue sky. The scene is brightly lit, suggesting a sunny day.

Integrated Fisheries Assessment – Phase One  
Swan Valley Sport Fishing Enhancement Inc.  
Submitted by: Holly Urban & Melissa Johnson  
2011

## INTEGRATED FISHERIES ASSESSMENT - Part One

The Integrated Fisheries Assessment - Part 1 is a collaboration of various fisheries related projects in the Swan Valley Area conducted during the field season of 2011. This project was primarily funded through the Manitoba Fisheries and Enhancement Fund (FEF) and with support from project partners. The main objective of the project was to develop an integrated proposal to encompass both new and additional phases to past and present programs and research undertaken by SVSFE. Project activities included; fisheries and aquatic research on Whitefish Lake, Wellman Lake, the Swan River, and stocked trout lakes in the Duck and Porcupine mountains; walleye transfer/stocking for the surrounding area; and education seminars/events for youth & the public.

The full report of activities within the IFA #1 report is available, but for simplicity reasons, the report has been sectioned by location/activity to aid in sourcing material related to fisheries within the Swan Valley area. This document contains a summary of activities on Stocked Trout Waters completed in 2011.

## Stocked Trout Waters

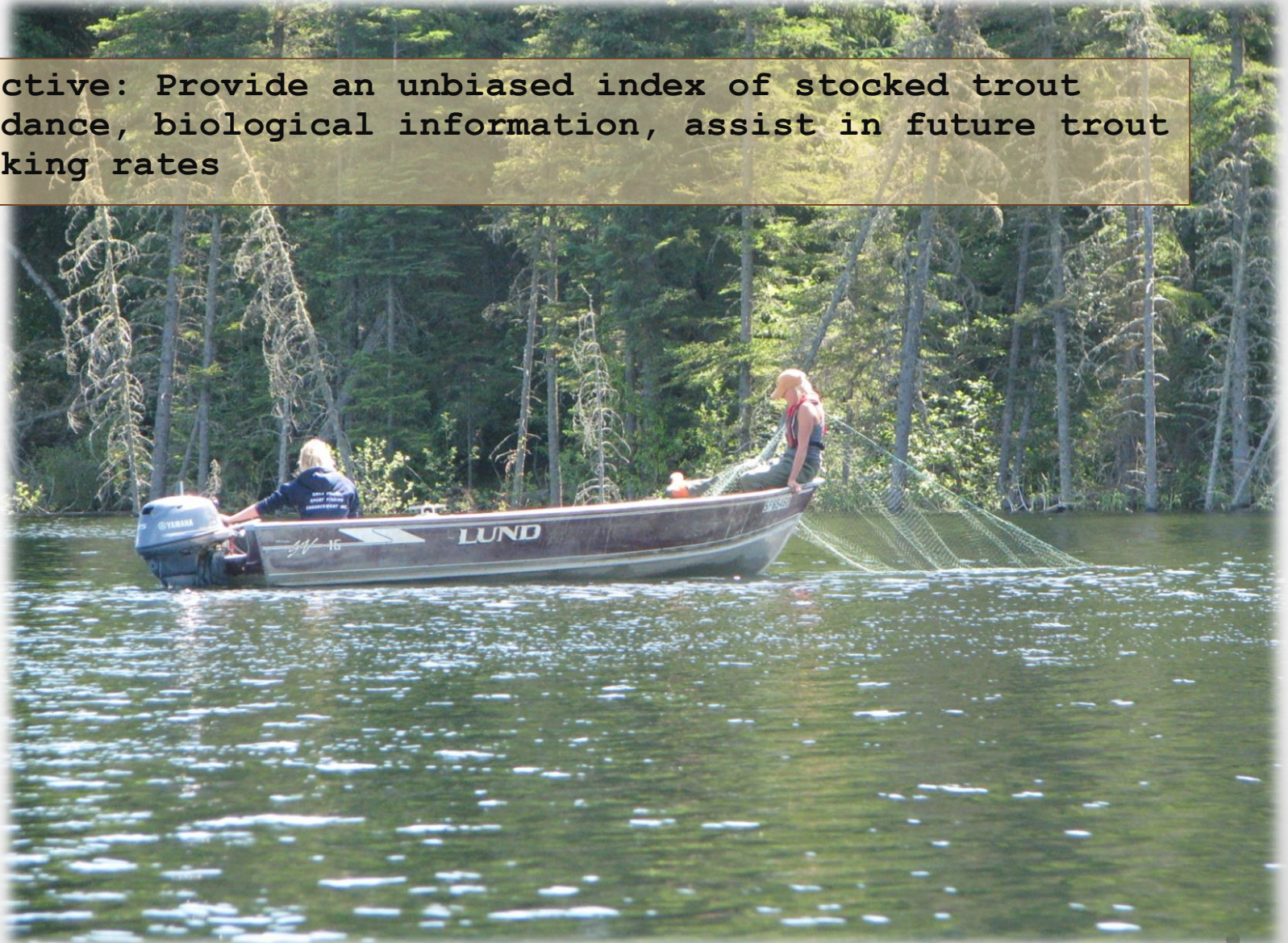
In the summer of 2011, technicians replicated the stocked trout assessment from 2010. The main objective of the assessment was to provide an unbiased index of stocked trout abundance, as well as to provide biological information on the target species. The secondary objective was to collect information which fisheries managers could utilize for trout stocking management. Proper stocking rates ensure maximum fish growth, angler success and the efficient utilization of expensive hatchery fish. Continuation and rotation of this project is required to properly identify management strategies. Lakes included in the project:

- Glad Lake
- Beaver Lake
- Two Mile Lake
- East Blue Lake
- West Blue Lake
- Gull Lake
- Black Beaver Lake
- Vini Lake



# Stocked Trout Assessment

Objective: Provide an unbiased index of stocked trout abundance, biological information, assist in future trout stocking rates

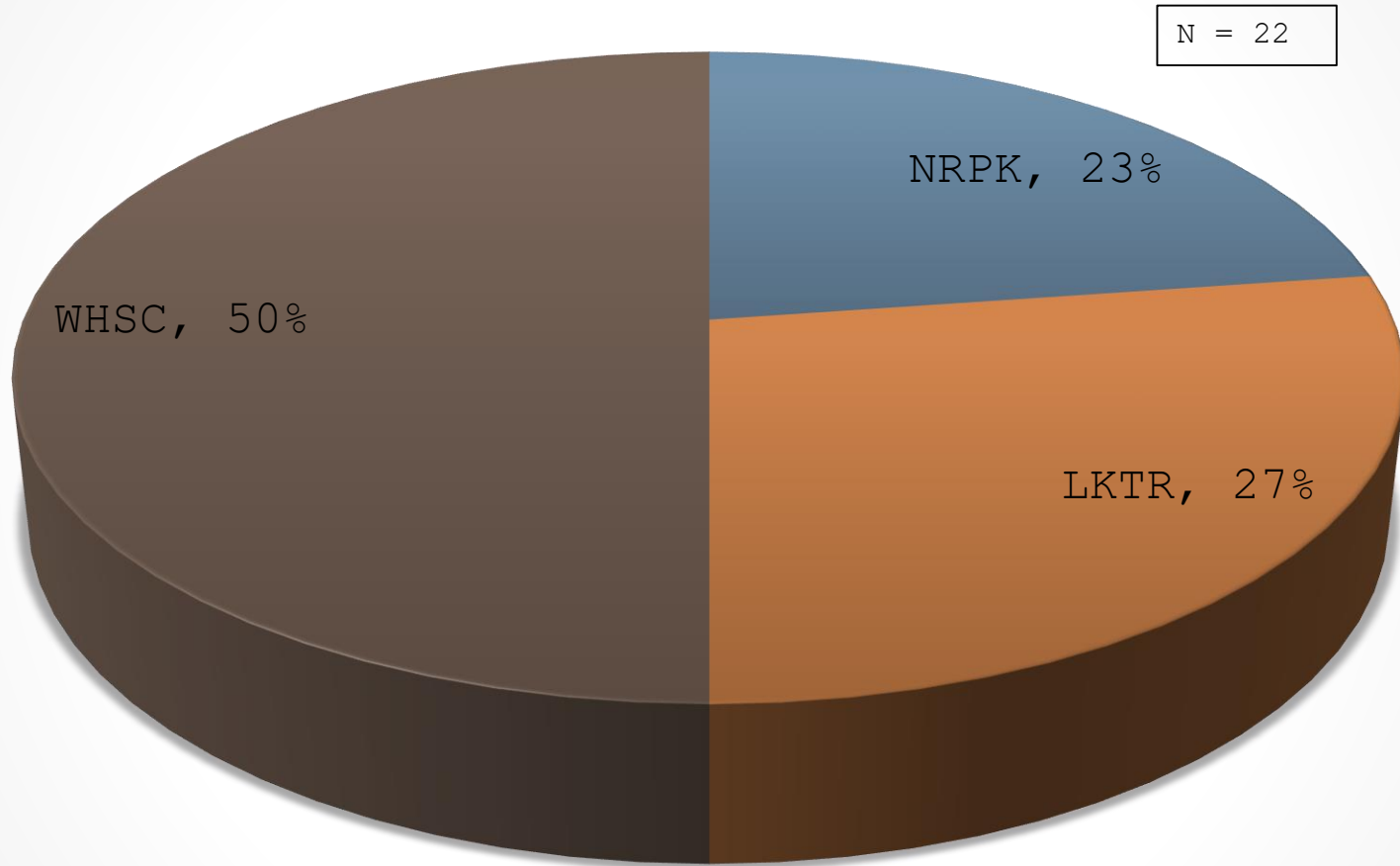




# Glad Lake



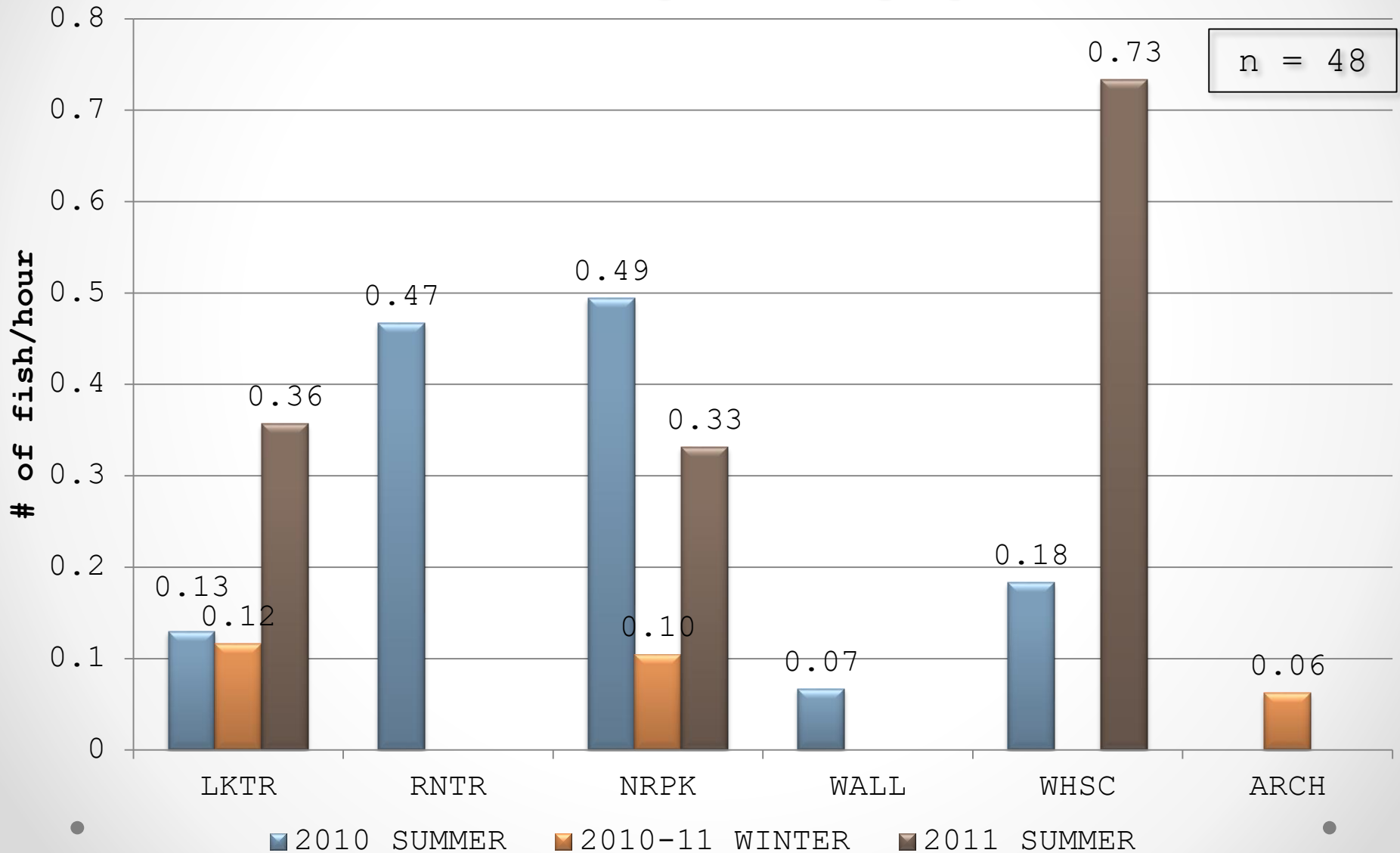
# Species Composition





# Catch per Unit Effort (CPUE)

2010/ 2011 Comparison by Species





Lake Trout



A total of six Lake Trout were caught ranging from 619 - 738 mm fork length



## Northern Pike

Glad lake also homes some master sized pike. This one angled, weighed in just under 20 lbs

A total of five northern pike were caught ranging from 601 - 692 mm fork length





# Beaver Lake

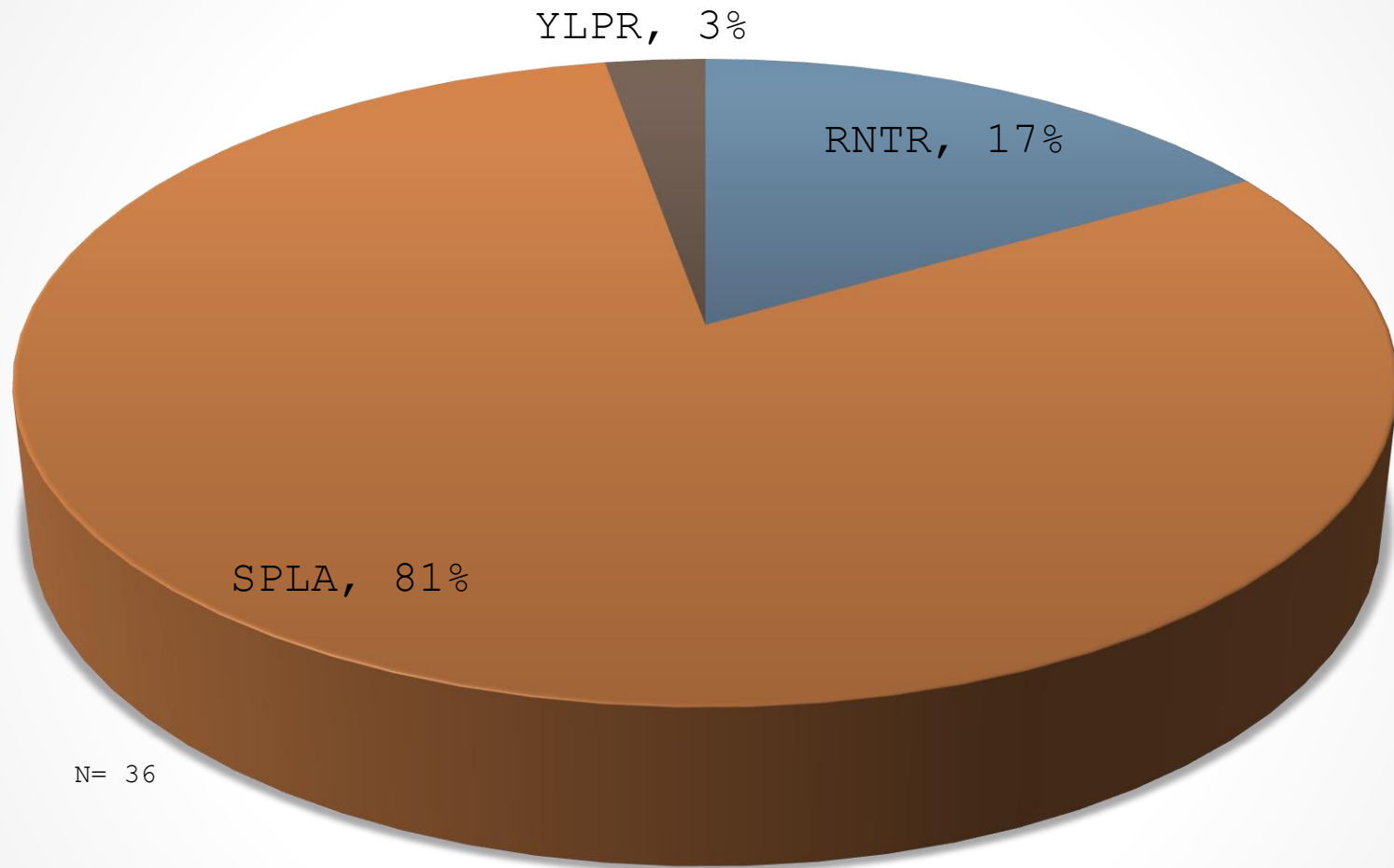


Beaver Lake - Stocked Trout

8/25/2018

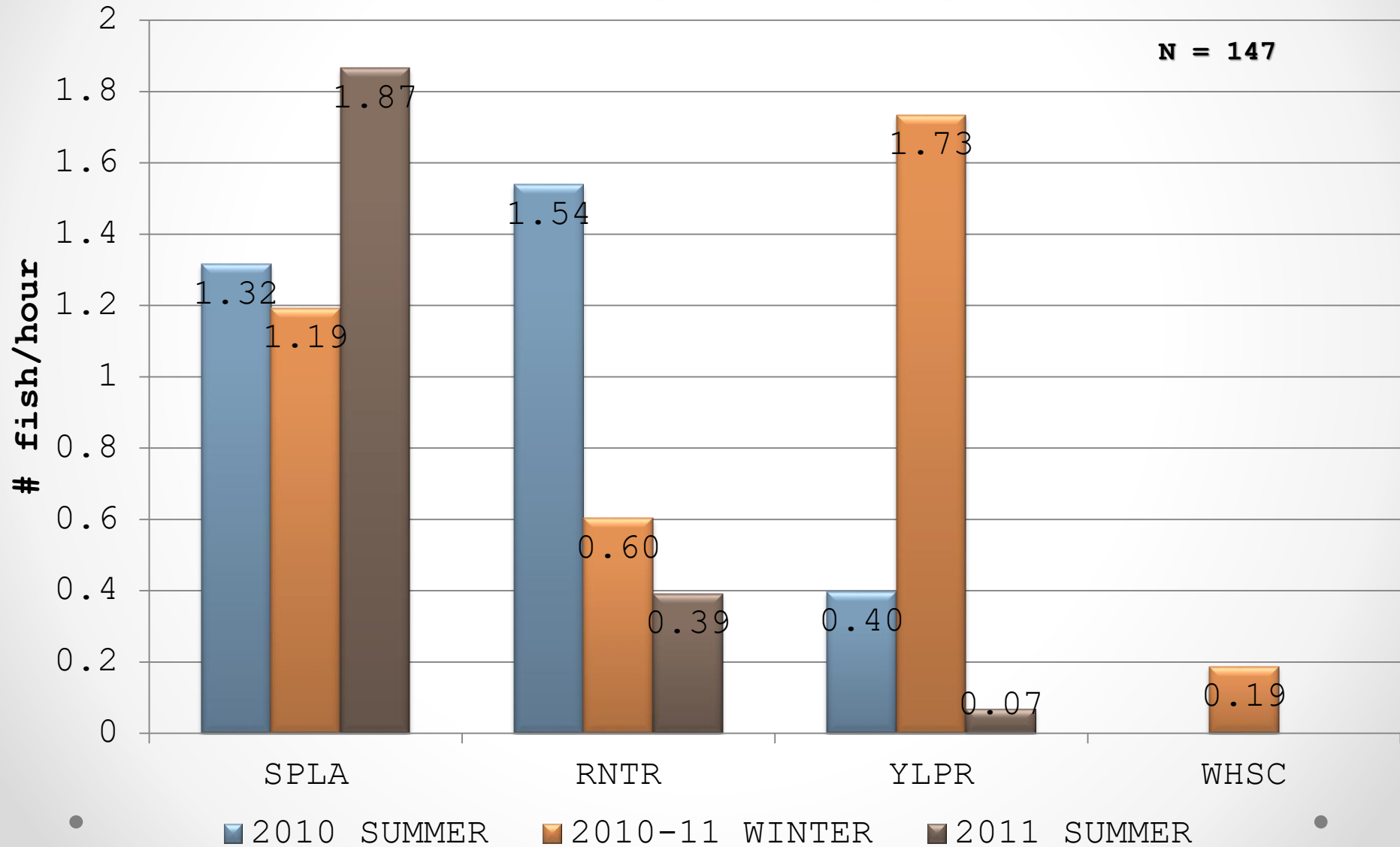


# Species Composition



# Catch per Unit Effort (CPUE)

2010/ 2011 Comparison by Species





# Splake



Total of twenty-nine splake were caught during the 2011 sampling ranging between 291 - 528 mm with ten recaptures.



# Rainbow Trout



Total of six rainbow trout were caught ranging between 320 - 380 mm

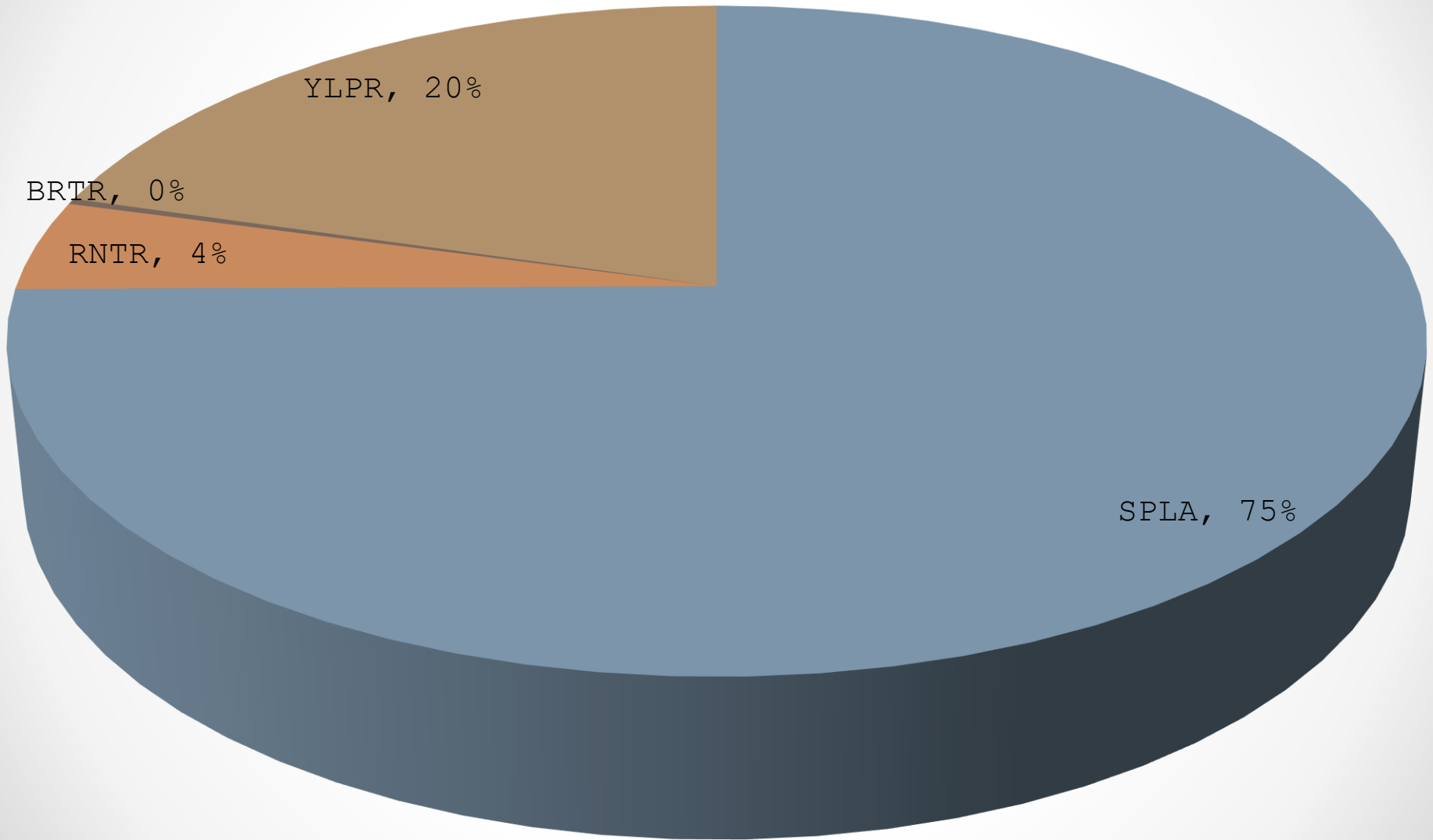


# Two-Mile Lake





# Species Composition



Brook Trout





Rainbow Trout





Splake

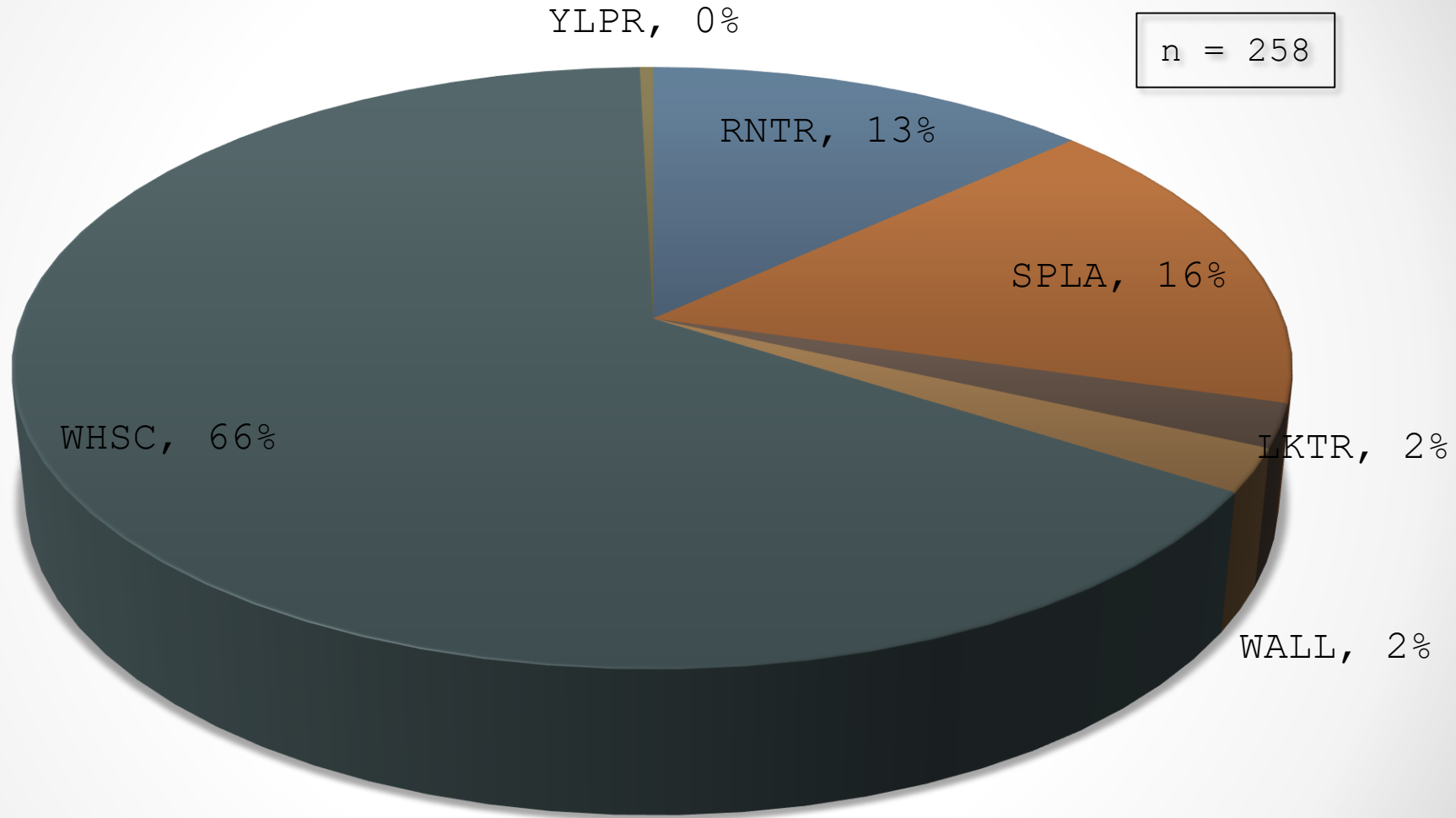




# East Blue Lake

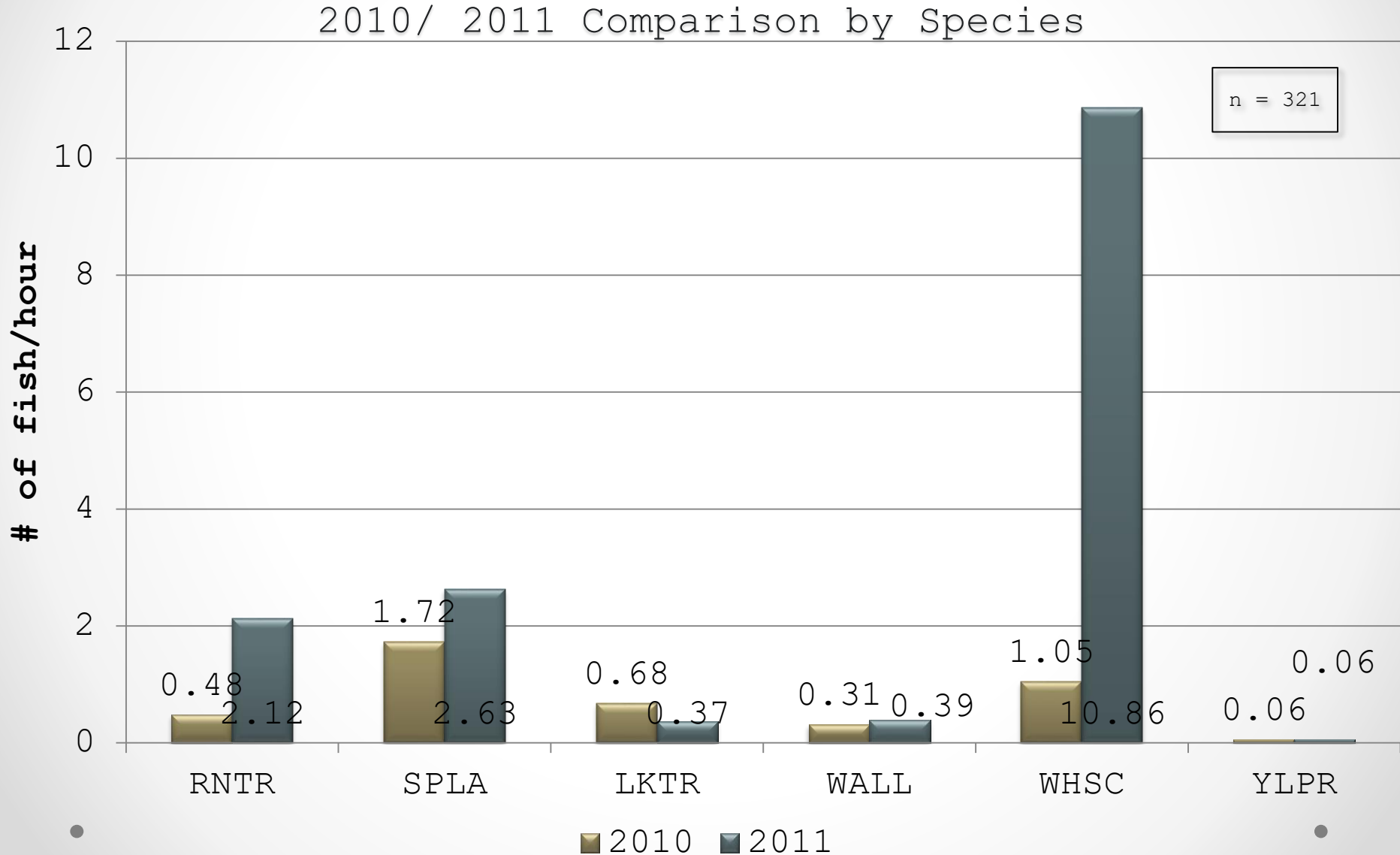


# Species Composition





# Catch per Unit Effort (CPUE)

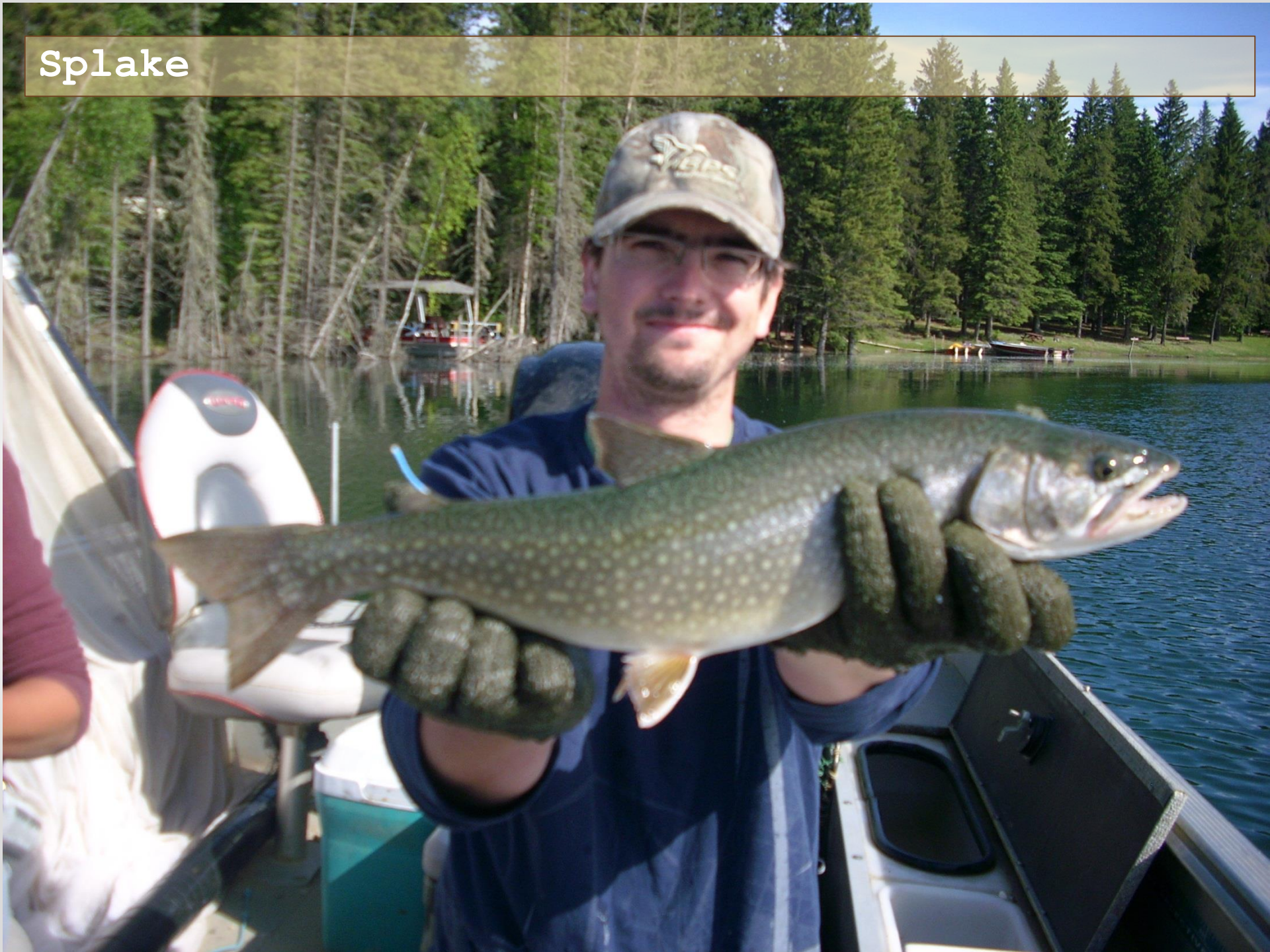


# Lake Trout





# Splake





# Rainbow Trout



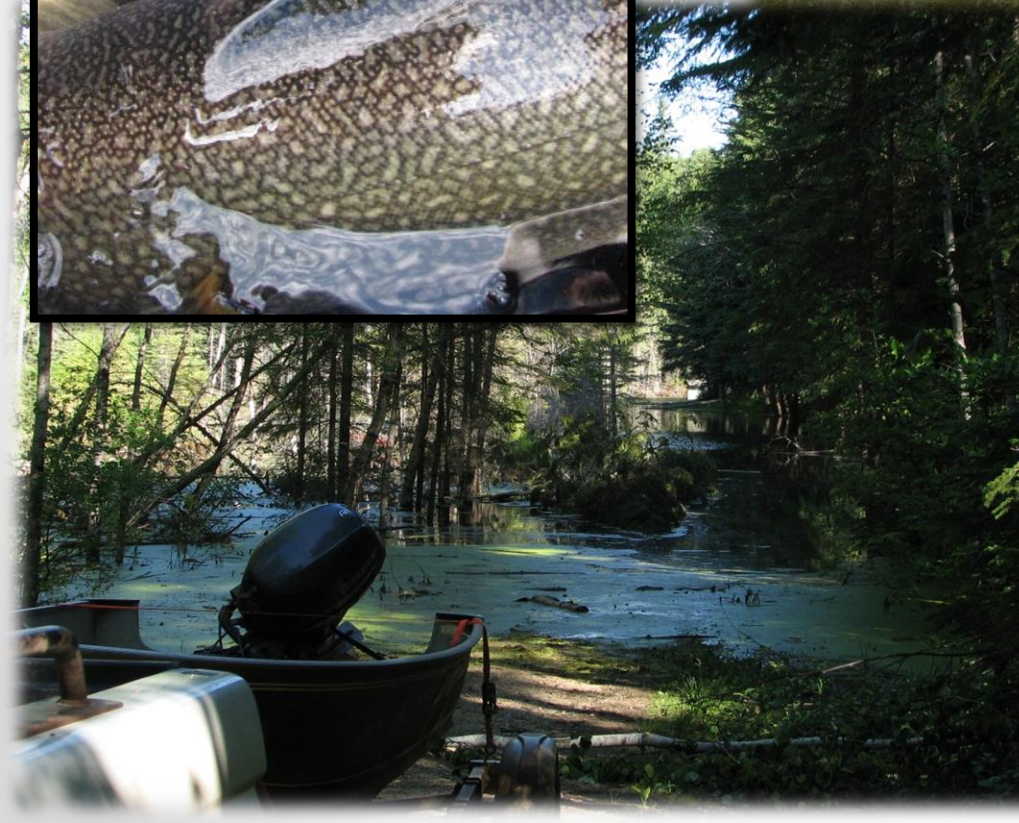


Walleye





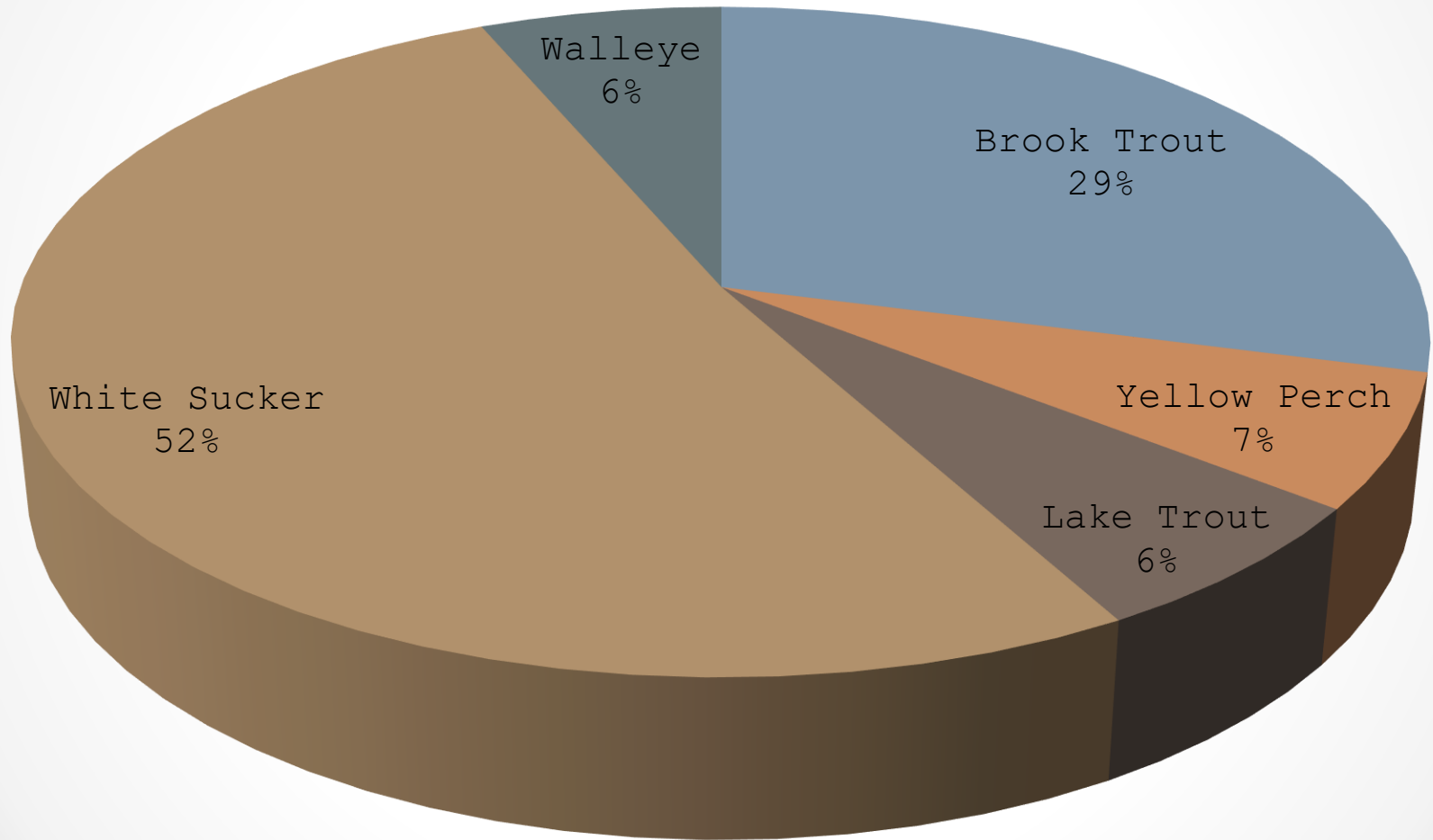
# West Blue Lake





# Species Composition

n = 31



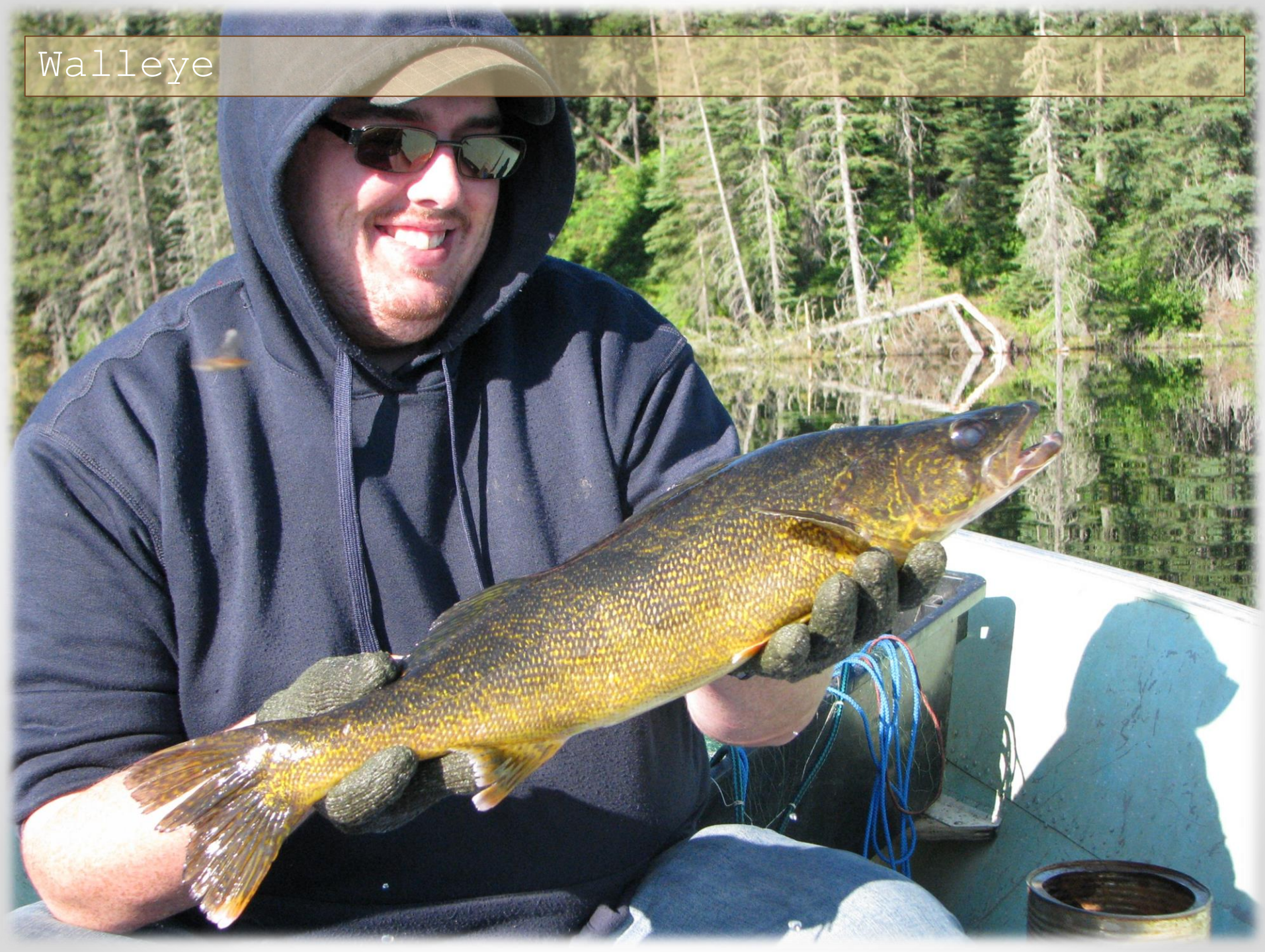
# Brook Trout



Brook Trout have displayed exceptional growth within the past two years



Walleye





# Lake Trout



Lake Trout were stocked regularly in the 1960's and then once in both 1976 and 1998. This was a new species found within the 2011 assessment.

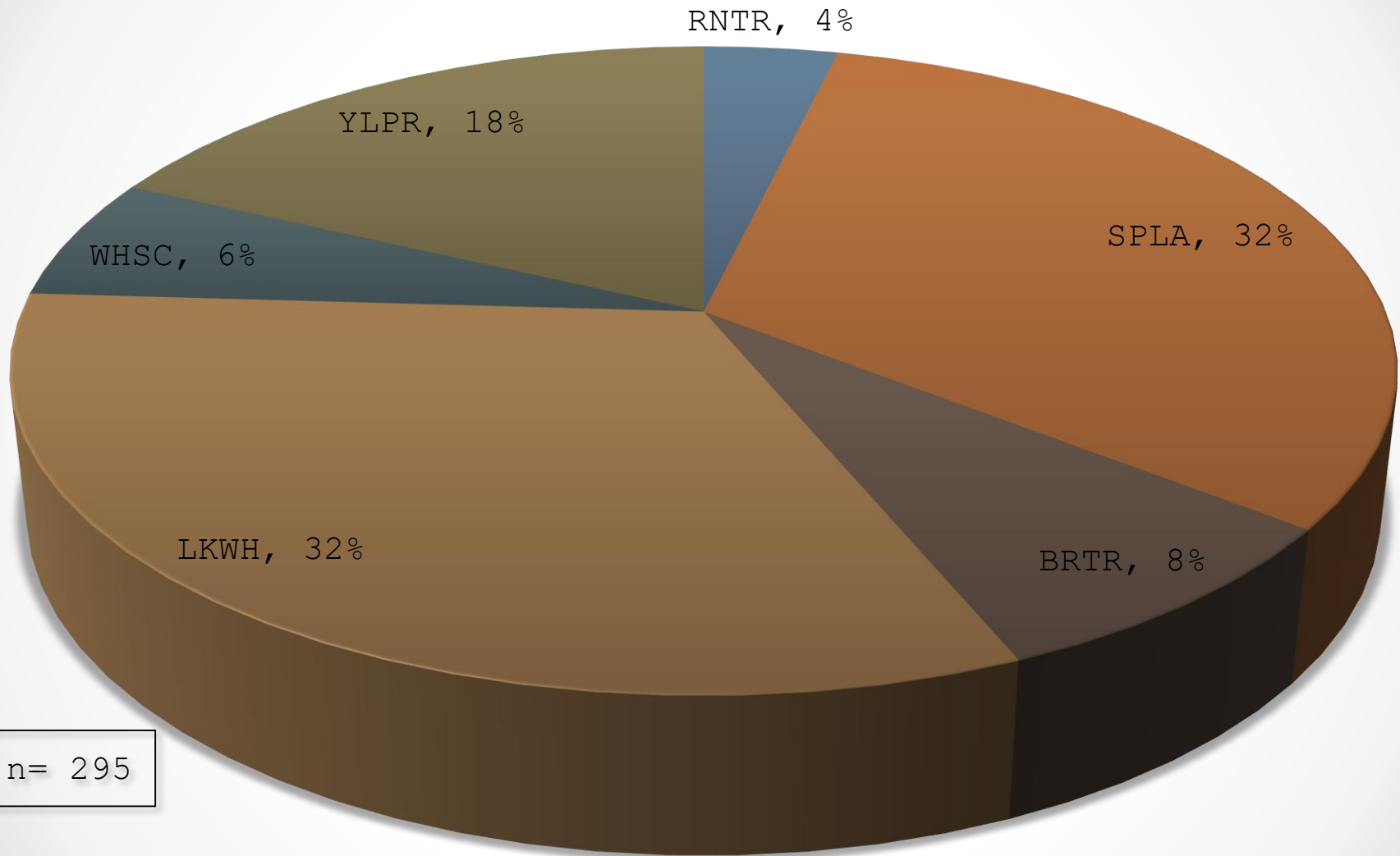




# Gull Lake



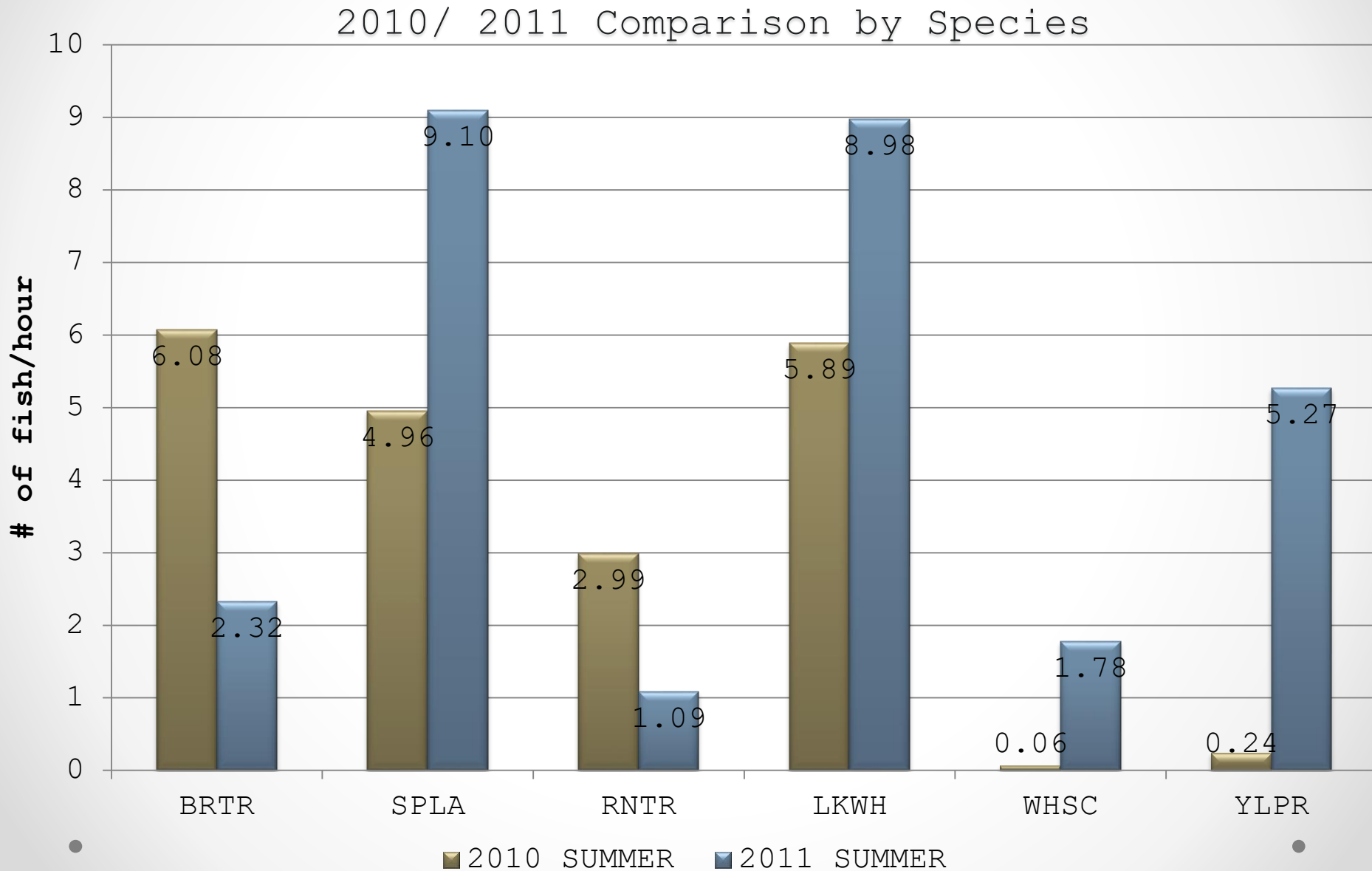
# Species Composition



Gull Lake displays one of the most diverse species composition of all lakes included in the Stocked Trout Assessment



# Catch per Unit Effort (CPUE)



A woman with glasses, wearing a light blue jacket and yellow pants, is smiling while holding a large whitefish. She is sitting in a boat on a body of water. In the background, another person wearing a camouflage hat is visible. The text "Lake Whitefish" is overlaid in the top right corner.

Lake Whitefish





Rainbow Trout

Splake





# Brook Trout



90cm 100cm 110cm  
Manitoba Conservation

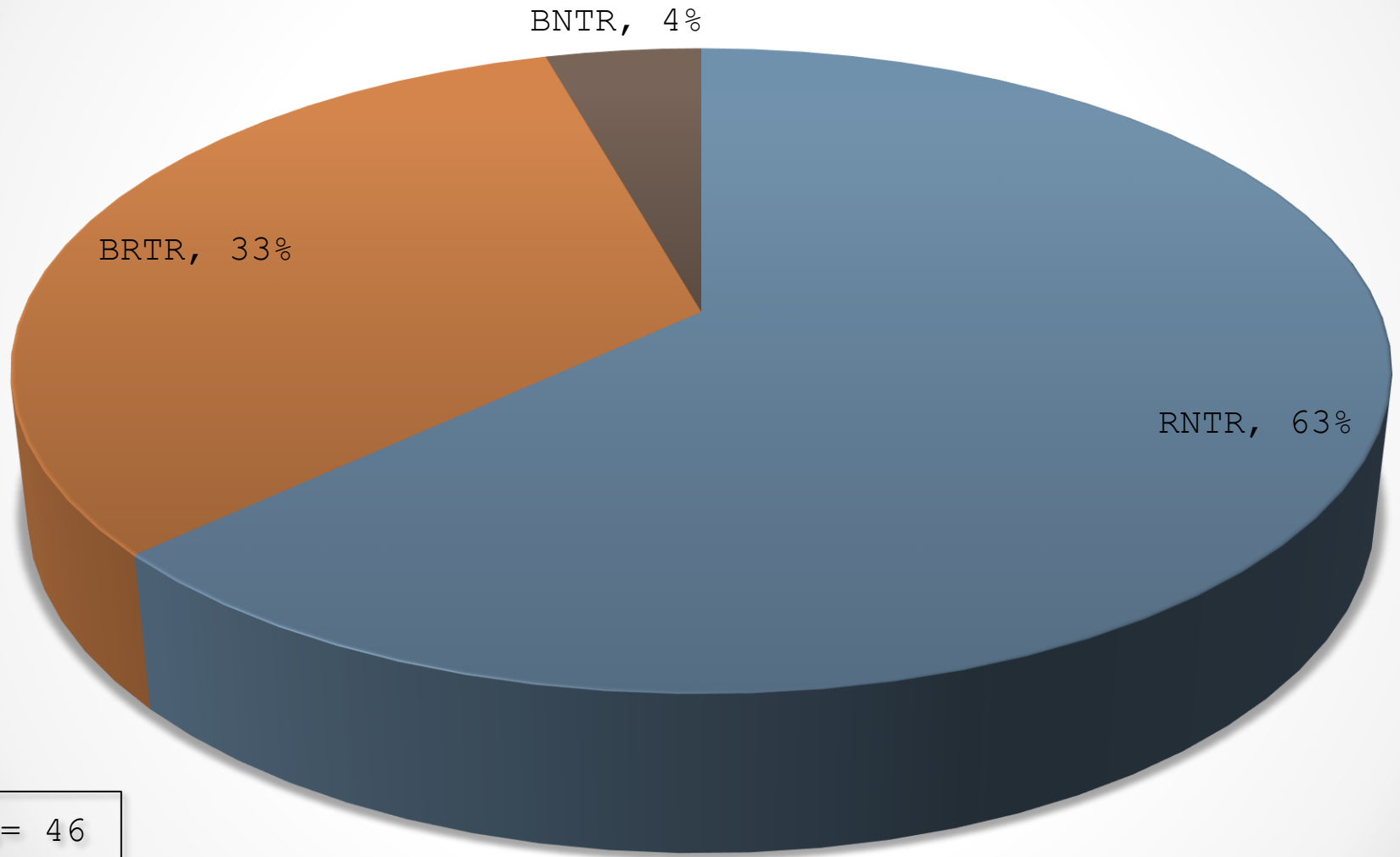


# Black Beaver Lake



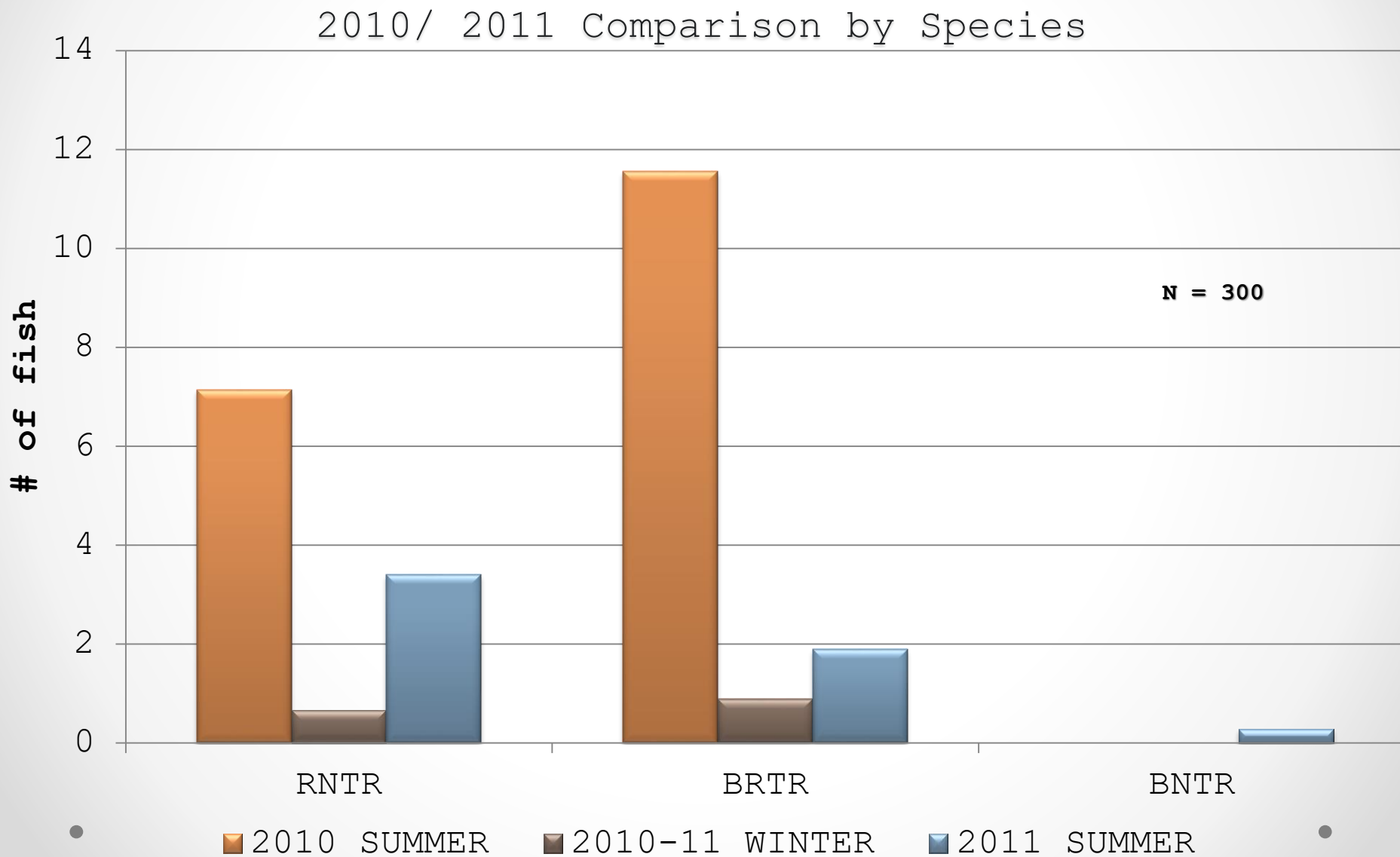


# Species Composition



n= 46

# Catch per Unit Effort (CPUE)





# Rainbow Trout






**Brook Trout**





A close-up photograph of a person with blonde hair, wearing a dark blue jacket over a red shirt, smiling while holding a large brown trout. The person is wearing dark, textured gloves. The trout is held horizontally, showing its full length and detailed patterns of dark spots on its golden-brown scales. The background is a blurred green forest under a blue sky with some clouds.

## Brown Trout

There are no records of brown trout being stocked in Black Beaver Lake.

Fork Length:430mm Total Length:442mm Weight:1035 g (n=1) Tag #: 406 (SVSFE Blue) "Catch me if you Can!"



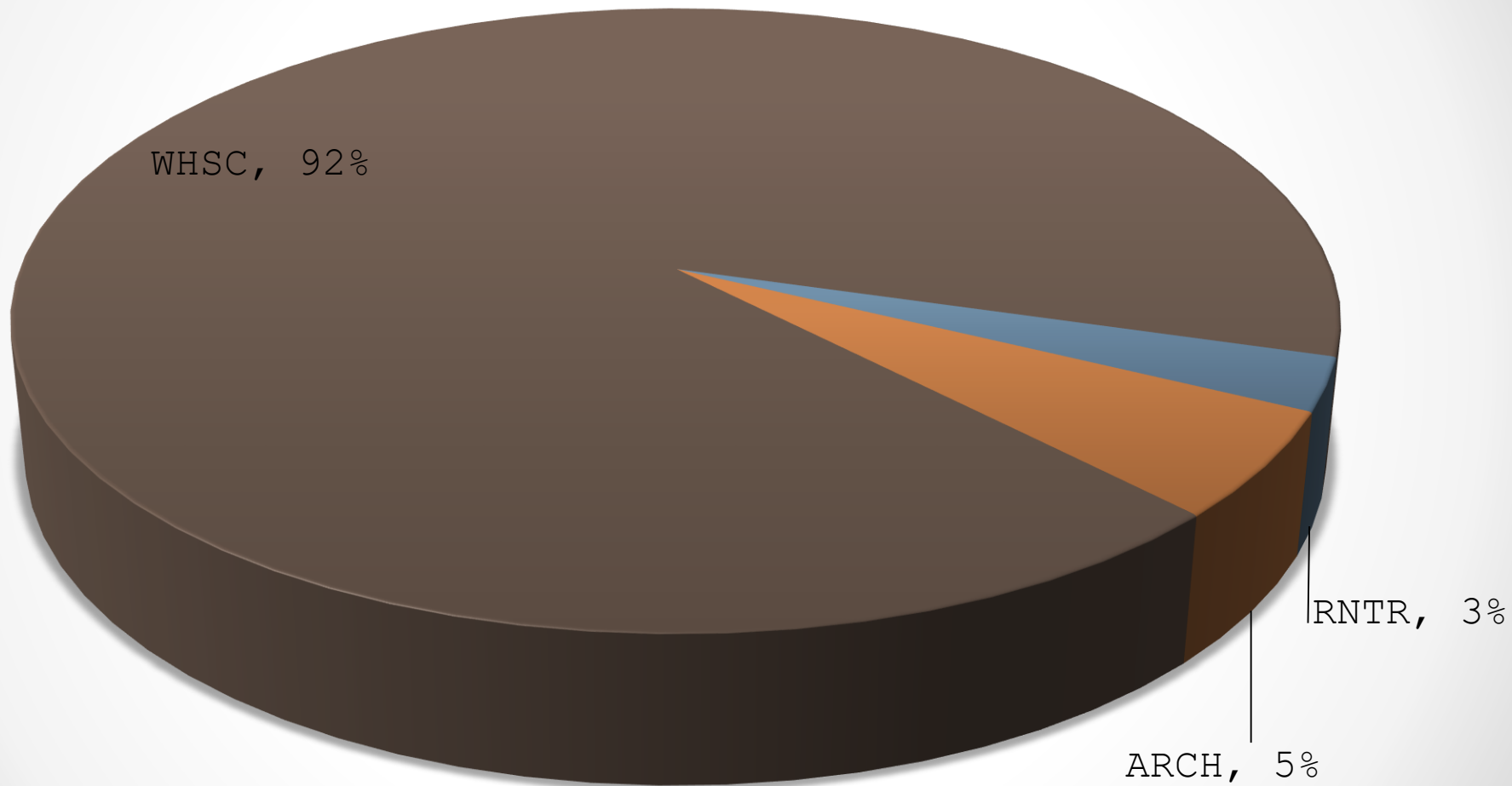
# Vini Lake



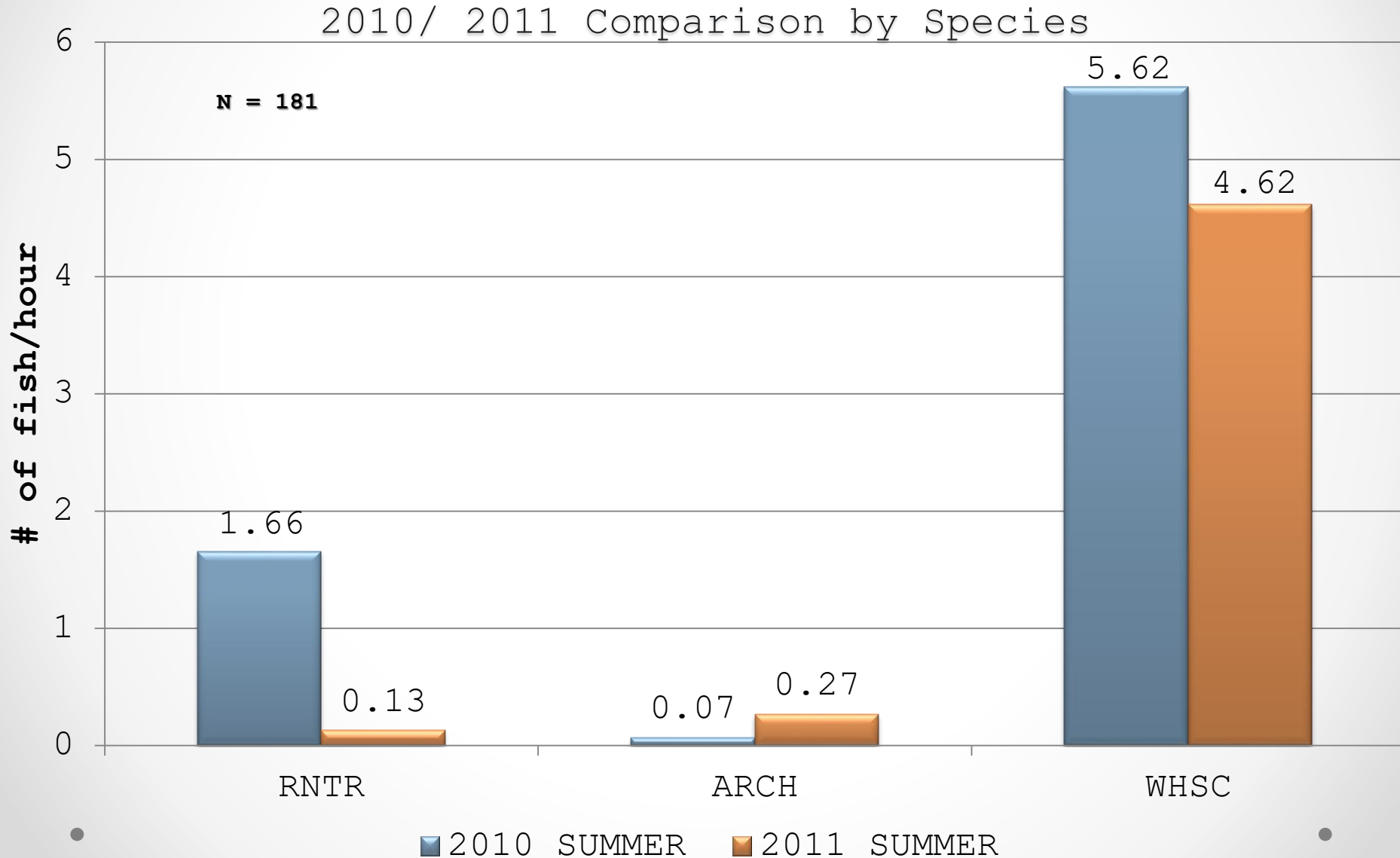


# Species Composition

**N = 73**



# Catch per Unit Effort (CPUE)





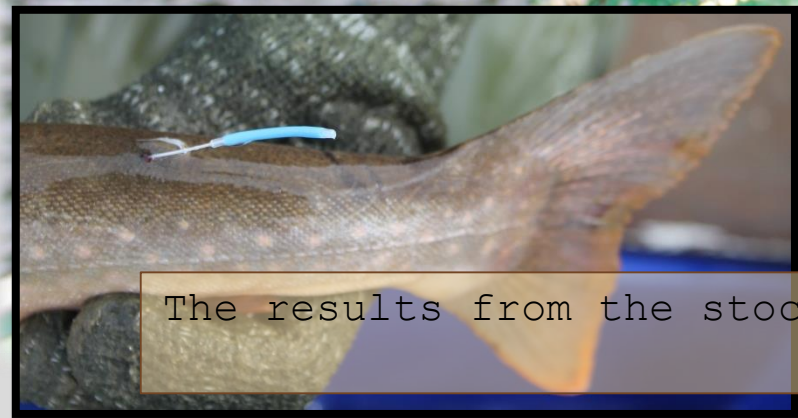


**Rainbow Trout**





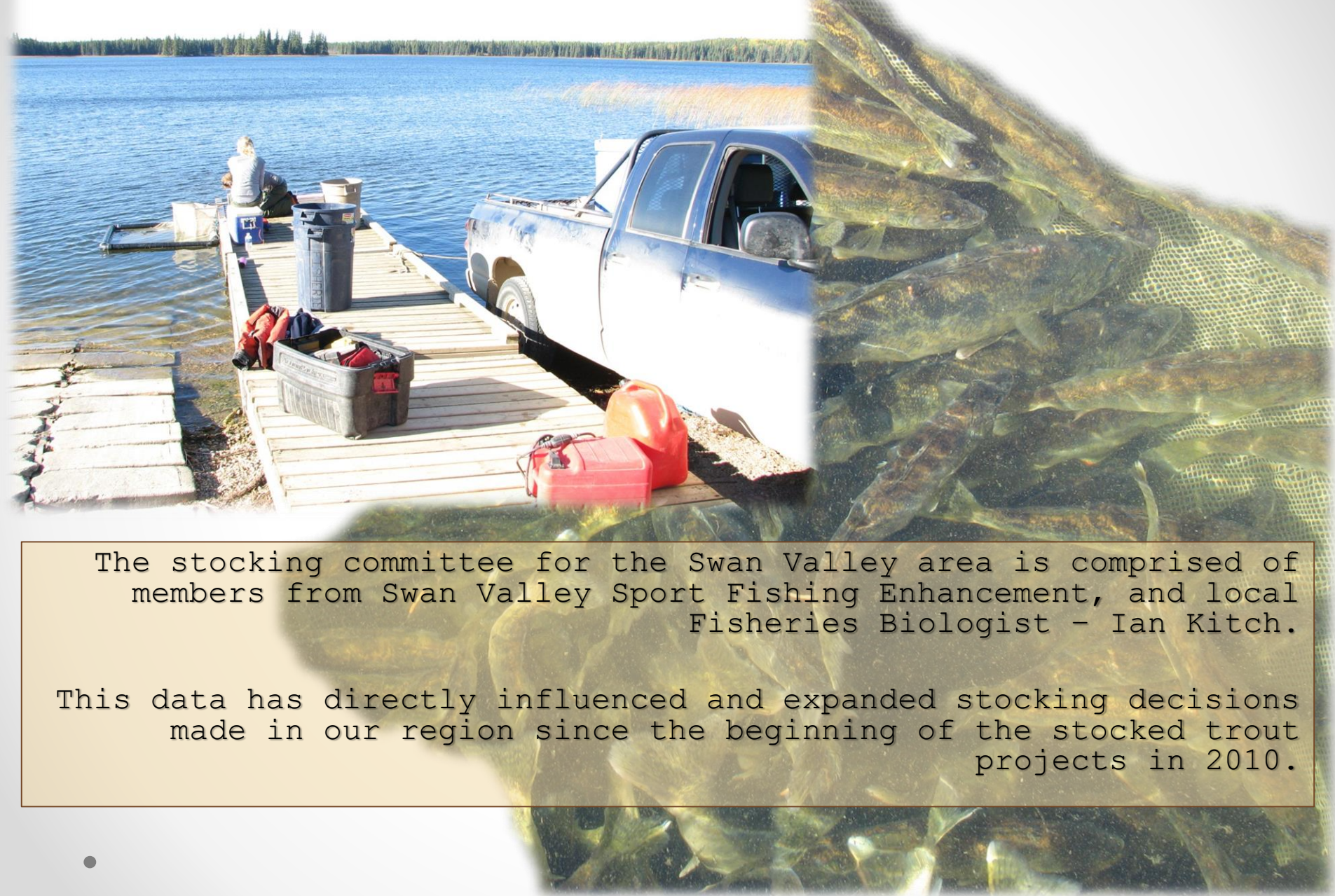
Arctic Char



The results from the stocked trout assessment also indicated suitable habitat for Lake Trout.



# 2011 Stocked Trout Assessment



The stocking committee for the Swan Valley area is comprised of members from Swan Valley Sport Fishing Enhancement, and local Fisheries Biologist - Ian Kitch.

This data has directly influenced and expanded stocking decisions made in our region since the beginning of the stocked trout projects in 2010.



# A Special Thank - You!

SVSFE would like to acknowledge the importance and benefits the Fisheries Enhancement Fund brings to our recreational fishery. The stamp is always a reminder that a portion of the license fee helps fund projects to educate the public and to ensure that future generations will enjoy fishing as much as the present population does!

A special thank you to the following individuals for helping to make the IFA#1 project a success! Ian Kitch, Lloyd Rowe, Bruno Bruederlin, Intermountain Sport Fishing Enhancement, Don Stokotelny, Kyle Murhead, Patrick Theissan, Joel & Marilyn Delaurier, Arch Dowsett - Blue Lakes Resort, Manitoba Fly Fisherman's Association, A.J Sutherland, SVSFE Directors, University College of the North, Eddie Chow, Parks Staff and to the individuals we may have missed.

## Project Funded by:

**Fisheries Enhancement Fund, Swan Lake Watershed Conservation District,  
Glad & Wellman Lake Cottage Owners Association, Swan Valley Sport  
Fishing Enhancement & Service Canada - Canada Summer Jobs**



# Project Partners

- Water Stewardship – Fisheries Branch



- Swan Lake Watershed Conservation District



- Glad/Wellman Lake Campers & Cottage Owners Association



- Manitoba Fly Fisherman Association