

# BEAUTIFUL LAKE - WALLEYE TRANSFER PROJECT

Featured Project

2016

## The Project Summary

Each year, SVSFE, Manitoba Water Stewardship - Fisheries Branch and project partners come together for a very popular project commonly referred to as the "Beautiful Lake Walleye Transfer". This particular project rears walleye in Beautiful Lake at an exceptional rate and each fall approximately two-weeks are spent trapping and transferring walleye to respective walleye lakes. This project has drawn attention, as it's commonly described as **"creating instant walleye fisheries"**.

## Project History

Over the years, several management initiatives to rear walleye have been attempted but with limited success. Follow up biological assessments helped expand upon the hidden potential present in Beautiful Lake. Results indicated suitable metrics for a two-tier stocking trial of both trout and walleye. This was largely due to the abundant populations of baitfish, fresh water shrimp, leeches & caddisfly larvae, along with the occurrence of periodic winterkills restarting the biological cycle. Other factors included the presence of suitable habitat for walleye rearing and rapid growth of both rainbow and/or brown trout. Beautiful Lake also has adequate water depth that would allow for stratification and thermocline development.

---

***"Fisheries management in today's world depends on building strong partnerships and this project is an excellent example of working together"***

• ***Ian Kitch,***  
***Regional Fisheries Manager***  
***MB Fisheries***

---



Thousands of young of the year walleye awaiting transfer

### Beautiful Lake Facts :

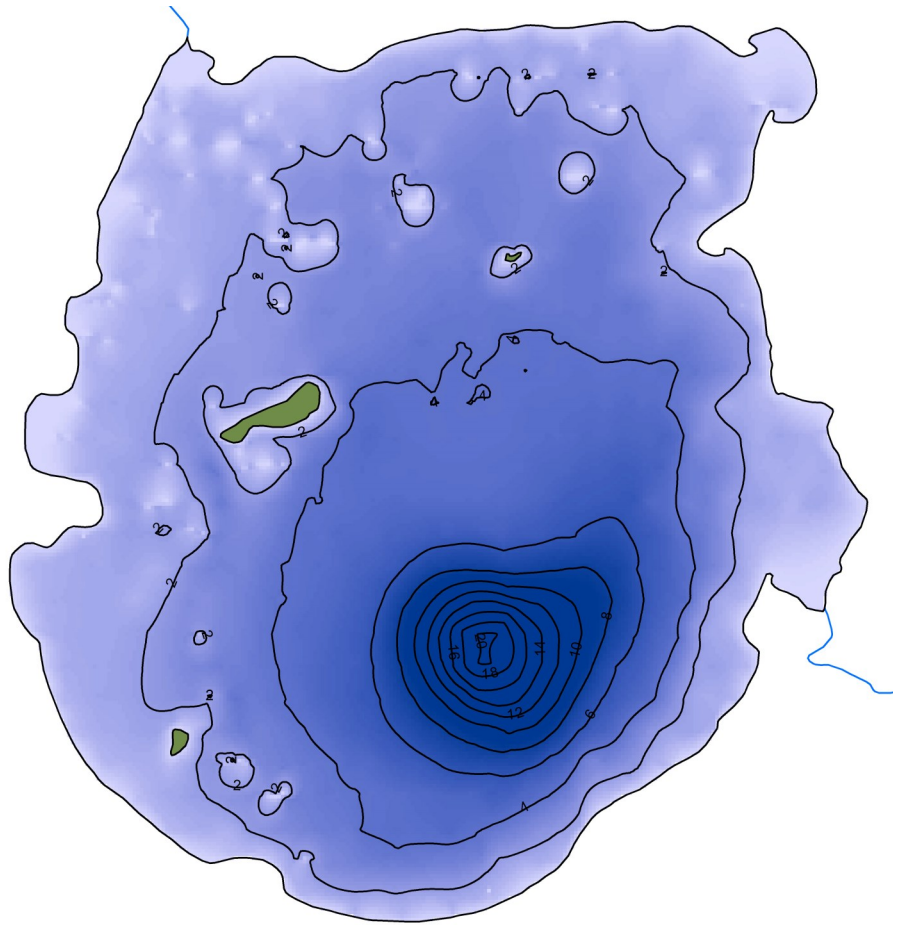
- Stocked annually with 500,000 OTC marked walleye fry from Provincial Hatchery
- Average summer growth for walleye 150-200 mm
- 118 Master Angler rainbow trout caught between January of 2009 - 2016. Largest being 71.12 cm (28")



# BEAUTIFUL LAKE

## Beautiful Lake Facts:

- 14U 361416 5713731  
Located in the Duck Mountain Provincial Park, MB
- Surface Area : 132.75 hectares
- Perimeter : 6.41 km (including islands)
- Volume: 4,276,863m<sup>3</sup>
- Maximum Depth: 20.3 m
- Littoral Habitat >50%
- Dominate Forage Species - fathead minnow, brook stickleback, freshwater shrimp
- Provides exceptional growth of YOY walleye for fall transfer.
- Central location for transferring walleye to many local lakes & rivers
- Suitable morphology for various capture methods
- Convenient and accessible boat launch for various boat sizes



Bathymetric Map of Beautiful Lake



## Long Term Management Objectives:

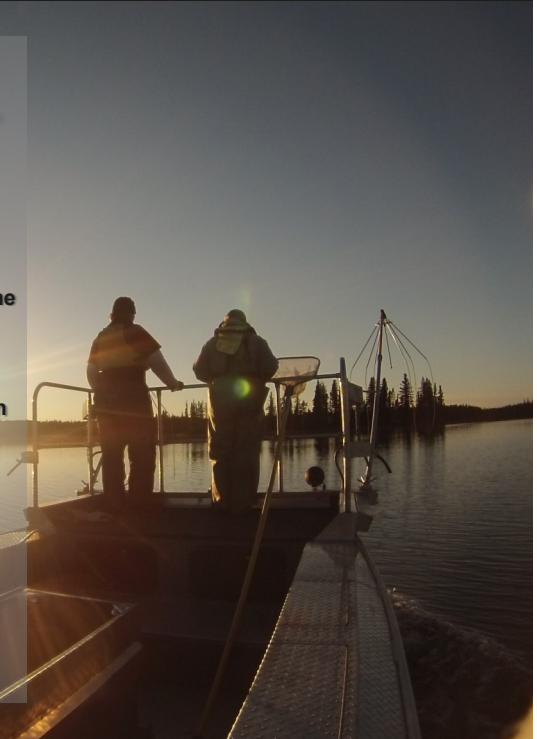
Manage partnerships to sustain the future of the transfer project

Rear walleye for stocking and determine priority lakes & stocking rates using scientifically based assessments

Monitor transfer successes/failures on Beautiful Lake and recipient lakes to advance practices for the future

Provide recreational fishing opportunities that contribute to the economic development of the area

Create education and employment opportunities for inspiring fisheries professionals





## Creating & Enhancing Our Fisheries



## FWEF Funding

The Fisheries & Wildlife Enhancement Fund (formally the FEF) is the main contributor to not only this particular project, but for other worthwhile projects in which SVSFE and partners have conducted over the years. FWEF initiatives and support are key components to the project's success



Transfer Project in action





# Acknowledgments

Many new groups join the transfer every year, and every helping hand plays a big role in the project. Special thanks to all who have taken part. Recognition should be given to our committed annual partners:

Sport Fish Group: Intermountain Sport Fishing Enhancement

Government: Fire Program, Fisheries, Parks, Wildlife & Forestry Branch

Local Cottage Associations: Childs, Singush and Glad/Wellman

Academic Institutions: Swan Valley School Division & UCN

Local Outfitters & Lodges: Blue Lakes Resort & Wellman Lake Lodge

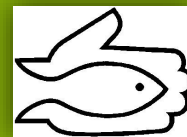
Those interested in the Beautiful Lake Transfer....  
.....See you in September!

"SVSFE would like to emphasize the importance of this project and how this type of project provides instant and long term benefits to our fisheries. The project will only grow to be bigger and better as partnerships and public awareness grow and develop each year."

SVSFE

## Contact Us

For more info  
on our projects  
or activities  
contact:



### Swan Valley Sport Fishing Enhancement Inc.

Box 120

Swan River, MB R0L 1Z0

(204) 734-8836

svsfe@mymts.net

Visit us on the web at

www.swanvalleysportfishing.com

Facebook: Swan Valley Sport Fish

### Manitoba Water Stewardship Fisheries Branch

Box 640

Swan River, MB R0L 1Z0

(204) 734-3429

www.gov.mb.ca



Table: Walleye transferred through transfer project since 2009

Beautiful Lake Walleye Transfer								
	2009	2010	2011	2012	2013	2014	2015	Total by Lake
Wellman Lake	48	522	222	153	144	360	1,005	2,454
Spray Lake	0	50	41	75	0	285	0	451
Verrall Lake	0	74	57	132	0	100	394	757
Child's Lake	230	0	0	0	0	368	1,000	1,598
Singush Lake	650	0	0	77	200	662	814	2,403
Line Lake	0	539	54	89	0	0	0	682
Chain Lake	0	40	0	0	0	0	0	40
Marge Lake	0	399	585	125	0	569	50	1,728
Vermillion Reservoir	0	20	300	200	324	200	195	1,239
Swan River	0	395	54	0	0	124	0	573
Beaver Lake	0	0	548	90	882	737	865	3,122
West Blue Lake	0	50	0	0	0	0	0	50
Langan Lake	0	0	0	50	0	0	0	50
<b>TOTALS:</b>	<b>928</b>	<b>2,089</b>	<b>1,861</b>	<b>991</b>	<b>1,550</b>	<b>3,405</b>	<b>4,323</b>	<b>15,147</b>

Average size: 29cm 35cm 34.5cm 27.6cm 17.5cm 24.4 cm 32.2cm